



**The new Alien Digital Video Recorder**

**Remote Client Software**

**Model DSD105**



**Software Manual for  
DVR Remote Client Software &  
Mobile Phone Client Software**



**Version 4.0.1(Rev.2)**

| <b>Table of Contents</b>                                     | <b>Page</b> |
|--|-------------|
| 1. Introduction  | 4           |
| 2. Software Install, Uninstall and Use                       | 4           |
| 2.1 Quick Start Guide  | 4           |
| 2.2 Installing remote client software                        | 8           |
| 2.3 Un-Installing remote client software                     | 11          |
| 3. Connecting to an Alien DVR using Client Software          | 12          |
| 3.1 Logging on to client software on start up                | 12          |
| 3.2 Main Interface Screen (Preview)                          | 13          |
| 3.2.2 Configuring the Alien DVR using DHCP                   | 13          |
| 3.2.3 Manually configuring the Alien DVR                     | 13          |
| 3.2.4 Viewing cameras using preview screen                   | 14          |
| 3.2.5 Preview in List or Group mode                          | 15          |
| 3.2.6 Add Areas (accessing multiple DVRs)                    | 16          |
| 3.2.7 Display Formats  | 16          |
| 3.2.8 Enlarge Camera Preview Window                          | 17          |
| 3.2.9 Multi-window   | 17          |
| 3.2.10 Front page/Next page                                  | 17          |
| 3.2.11 Cycle the channel of one device or one group          | 17          |
| 3.2.12 Image Capture   | 18          |
| 3.2.13 Setup video parameters                                | 18          |
| 3.2.14 Remote PTZ Control                                    | 18          |
| 3.2.15 Control PTZ   | 18          |
| 3.2.16 Adjust PTZ preset                                     | 18          |
| 3.2.17 Set Preset  | 19          |
| 3.2.18 Setup Sequence  | 19          |
| 3.2.19 Add stream media server                               | 19          |
| 4. Configure   | 20          |
| 4.1 Adding a DVR   | 20          |
| 4.2 Define network preview sequence                          | 23          |
| 4.3 Delete DVR server  | 24          |
| 4.3.1 Modify DVR parameters                                  | 24          |
| 4.3.2 Modify channel properties and network preview protocol | 24          |
| 4.4 View DVR local log                                       | 24          |
| 4.5 Client Software Local Setup                              | 26          |
| 4.5.1 Play mode  | 26          |
| 4.5.2 Record mode  | 26          |
| 4.5.3 Log  | 28          |
| 4.5.4 Others   | 28          |
| 4.5.5 Version Info   | 28          |
| 4.6 Remote Configure   | 29          |
| 4.6.1 Server configuration                                   | 29          |
| 4.6.2 Channel configuration                                  | 30          |
| 4.6.3 COM configuration                                      | 34          |
| 4.6.4 Alarm Configuration                                    | 35          |
| 4.6.5 User configuration                                     | 38          |
| 4.6.6 Transaction configuration                              | 38          |
| 4.6.7 Others   | 38          |
| 4.7 Alarm configure  | 39          |

|       |                                      |    |
|-------|--------------------------------------|----|
| 4.7.1 | Alarm Linkage                        | 39 |
| 4.7.2 | Alarm Linkage button                 | 40 |
| 4.8   | Local Log                            | 42 |
| 4.9   | Card Configure                       | 42 |
| 4.10  | Return                               | 42 |
| 5.    | Playback                             | 43 |
| 5.1   | Local Playback                       | 43 |
| 5.2   | Remote Playback                      | 43 |
| 5.2.1 | Playback by file type                | 44 |
| 5.2.2 | Playback by time                     | 45 |
| 5.3   | Playback Picture                     | 46 |
| 6.    | User Rights Management               | 48 |
| 6.1   | Add and Delete Users                 | 48 |
| 6.2   | Modify Users and select rights level | 49 |
| 7.    | E-Map (Electronic Map)               | 50 |
| 8.    | Hide function                        | 53 |
| 9.    | Lock function                        | 53 |
| 10.   | Voice Talk                           | 53 |
| 11.   | DVR Server Status                    | 54 |
| 12.   | Alien DVR Mobile Client              | 55 |
| 12.1  | Symbian Mobile Client                | 55 |
| 12.2  | Alien DVR Windows Mobile Client      | 58 |
| 12.3  | Connecting to the Alien DVR          | 62 |
| 12.4  | Controlling a PTZ                    | 64 |
| 12.5  | Disconnecting                        | 65 |
| 12.6  | Remote Connection Tip                | 65 |

## 1. Introduction

This software is the network client software version 4.0.1 used for network stand alone DVR and DVS. It supports 3 different resolutions of 1024\*768, 1152\*864 and 1280\*1024 by default the output resolution is 1024\*768.

Please note that the contents of this manual are subject to be changed without notice.

## 2. Software Install, Uninstall and Use

### 2.1 Quick Start Guide

This guide covers the settings in the DVR and in the Client software to allow a quick guide to getting the Alien running.

#### Logging onto the DVR

The DVR is mouse controlled, plug the mouse into the USB port on the front and move the mouse to check the pointer moves.

Click the right mouse button to bring up the menus and login using the DVR's admin username/password as follows ...

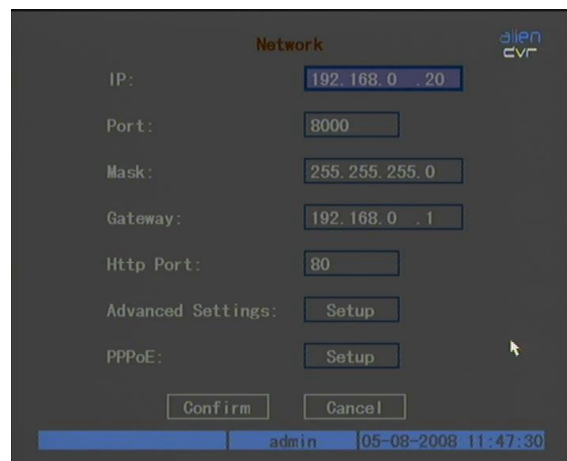
|          |   |       |
|----------|---|-------|
| Username | = | admin |
| Password | = | 12345 |

#### Setting the DVR's IP Address

Right click the mouse when logged into the DVR to pop up the menu, select **Main Menu**, then **Network**

You will need to set the following entries ...

- IP
- Port
- Mask
- Gateway (for internet access)



## Suggested IP Address Settings

The table below shows suggested settings for a DVR, the client software and a PC. If you choose to use these settings you should find that everything works from the outset.

|             | Alien DVR     | Client Software | PC            |
|-------------|---------------|-----------------|---------------|
| IP Address  | 192.168.0.68  | 192.168.0.68    | 192.168.0.10  |
| Subnet Mask | 255.255.255.0 |                 | 255.255.255.0 |
| Gateway     | 192.168.0.1   |                 | 192.168.0.1   |
| Port        | 8000          | 8000            |               |

## Installing the Client Software

Run setup.exe from the CD and install the client software using the Installer on the **PC Client Software** tab. Note that this will install both the client & player software together. Refer to section 2.2 on detailed installation guide.

## Launching the Client Software

After installing the Alien DVR Client you will be presented with the following logon screen when running the application ...



### IMPORTANT:

This username/password is being requested by the client software and is **not** the same as the username/password combination for DVR logon.

The defaults for this client are ...

|          |   |        |
|----------|---|--------|
| Username | = | admin  |
| Password | = | 123456 |

## Client Software - Setting the IP Addresses

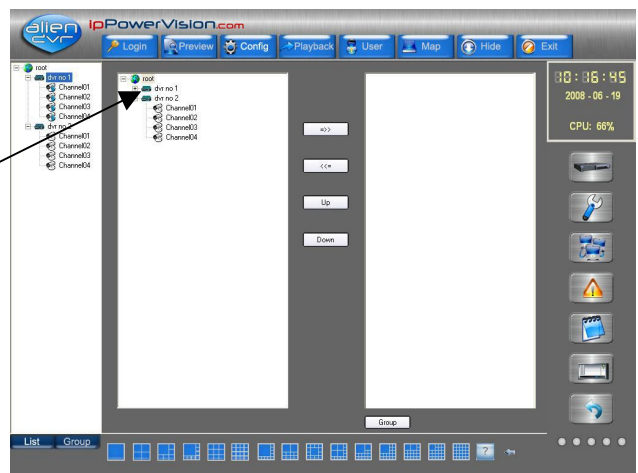
The DVR Client is pre-configured with a device called **DVR No 1** having an IP address 192.168.0.68 using TCP Port 8000.

You can check or change this within the client as follows ...

1. Click on the Configure option at the top of the screen.



2. Double click on the DVR No.1 (mouse left button)



3. Check or set the IP, Username, Password and Port fields.

4. Click on OK to save the settings.

**Server Properties**

Server Properties Configuration

|                |                      |              |                      |
|----------------|----------------------|--------------|----------------------|
| Server name:   | <input type="text"/> | Server type: | MC                   |
| Register       | Normal               | Server IP:   | <input type="text"/> |
| User name:     | admin                | Password:    | *****                |
| Port:          | 8000                 | Channel      | 8                    |
| Multicast      | <input type="text"/> | DNS IP:      | <input type="text"/> |
| Belong to area | 1                    |              |                      |
| Serial         | <input type="text"/> |              |                      |

OK Cancel

## Client Software – Viewing a Camera

1. Select 'Preview' on the upper menu bar.

2. Double click on a camera channel in the left hand panel to select a camera view





## 2.2 Installing remote client software.

Step1: Insert the CD provided in to a PC operating under a Windows environment. The software should 'auto run' and display the following launch screen. Fig. 1

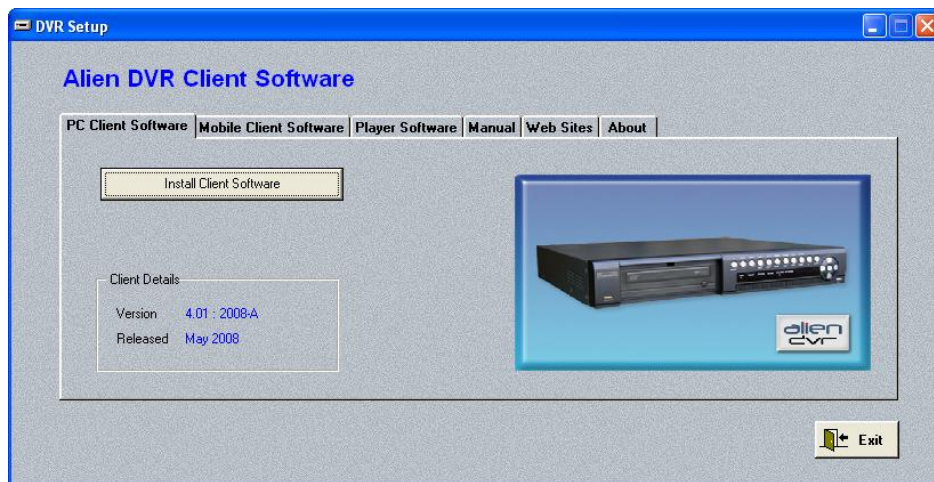


Fig 1

(N.B. If this screen does not appear automatically then the installer screen will have to be launched by selecting the 'setup.exe' file located on the disk provided.)

The launch screen allows the loading of any the software applications all of which are specific to the Alien DVR.

The disk includes:

**PC Client Software** – this allows connection to an DVR over a Local Area Network (LAN) or a Wide Area Network (WAN)

**Mobile Client Software** – this provides connection functionality to the DVRs broadband connection via a mobile link.

**Player Software** – Allows the playback of recorded files on a local PC.

**Manuals** – including operating instructions for the DVR and Remote Client Applications.

**Website Links** – Links to useful websites, including the AlienDVR website.



Step 2: Select “PC Client Software” and click on “Install Client Software”. The installation process will now commence with the following screen fig.2.



fig. 2

Once completed the following screen will appear fig. 3



fig. 3

To proceed with installation click “Next”. This will be followed by an information screen fig. 4



fig. 4

At this point make a note of the default user name and password for the client software, as this will be needed to access the Client Software on launching; the default *username* is

“admin” and the *password* is “123456” . Then proceed by clicking “Next”, the following screen will appear as in fig. 5.

(Special Note: The DVR password is 12345 and the Client software password is 123456)



fig. 5

By clicking “Next, the process should continue by following the onscreen instructions.



fig. 6

This screen display (fig. 6) will indicate the progress of the installation process and may take a few moments to complete. Once the Client Software installation is complete the following screen fig. 7 will allow you to run the application for the first time by selecting “Run Alien DVR Now” and clicking “Finish”.



fig. 7

### 2.3 Un-Installing remote client software

To uninstall the application proceed as if installing the application via the 'setup' procedure until the follow screen is encountered fig. 8.



fig. 8

Highlight the “Uninstall” radio button and click “Next”. The programme should now automatically uninstall itself from the PC.

### 3. Connecting to an AlienDVR using Client Software

#### 3.1 Logging on to client software on start up

Prior to logging in

On initially clicking on Client Software icon fig. 9 you will be requested to input the default log on username (admin) and “password” (123456) as shown in fig 10.



fig. 9

A Windows-style dialog box titled "Login". It has a blue title bar with a close button (X). The main area is white and contains two input fields. The first is labeled "User name:" with a user icon and contains the text "admin". The second is labeled "Password:" with a key icon and contains six asterisks "xxxxxx". Below the input fields are three buttons: "Modify", "Login", and "Cancel".

fig. 10

At this point you can opt to change the password for the ‘Admin User’ by clicking “Modify” which will allow the following menu to appear fig. 11. The ‘Old’ Password needs to be retyped into the entry box along with the ‘New’ password (which must be at least 6 or more letterers or numbers). This then needs to be verified and completed by clicking “Submit” (fig 11).

A Windows-style dialog box titled "Login". It has a blue title bar with a close button (X). The main area is white and contains two input fields. The first is labeled "User name:" with a user icon and contains the text "admin". The second is labeled "Password:" with a key icon and contains six asterisks "xxxxxx". Below the input fields are three buttons: "Modify", "Login", and "Cancel". Below these buttons is a section titled "Password Information" with three input fields. The first is labeled "Old" with a key icon, the second is labeled "New" with a key icon, and the third is labeled "Verify" with a key icon. Below these fields are two buttons: "Submit" and "Cancel".

fig. 11

### 3.2 Main Interface Screen (Preview)

Once logged in the “Main Interface Screen will appear fig. 12. This is the central hub around which all functionality of the AlienDVR can be controlled.



fig 12

You will note that there is already a DVR with four cameras listed in the top left hand corner.

#### 3.2.2 Configuring the AlienDVR using DHCP

The AlienDVR can acquire IP settings via Dynamic Host Configuration Protocol (DHCP).

By entering the “network” menu from the “Main Menu” the DVR can be set to acquire an IP address automatically from the router it is connected to. Once in the “Network” menu, set the current default IP address at the top of the screen to 000.000.000.000. Then check the “Confirm” button, at which point the DVR will reboot.

On re-checking the “Network” menu (on reboot), you will notice that the DVR has been automatically assigned an appropriate IP Address, Subnet Mask and Gateway by the router. It is important to note these values, as they will be required by the ‘Client Software’ to connect to the DVR over a Local Area Network (LAN).

#### 3.2.3 Manually configuring the AlienDVR

The IP settings for the AlienDVR will need to be manually set if the DVR is to be connected:

1. directly to a PC by crossover cable
2. via a router which does not assign IP addresses via DHCP
3. via a router that has DHCP functionality disabled

To manually configure the Network menu you will need to set the following values:

- IP
- Port
- Mask
- Gateway
- Http Port

The table below shows suggested typical settings for the items listed.

|             | Client Software | AlienDVR      | PC            |
|-------------|-----------------|---------------|---------------|
| IP Address  | 192.168.0.68    | 192.168.0.68  | 192.168.0.10  |
| Subnet Mask | N/A             | 255.255.255.0 | 255.255.255.0 |
| Gateway     | 192.168.0.1     | 192.168.0.1   | 192.168.0.1   |
| Port        | 8000            | 8000          | N/A           |
| Http. Port  | 80              | 80            | N/A           |

Be aware that the IP settings for the DVR will depend upon the existing values for the Local Area Network. If the network you are connecting to does not use the network address 192.168.0 or does not use 255.255.255.0 as the subnet Mask, then the network settings will need to be appropriate to the network being connected to.

### Connecting to an Alien DVR over a Local Area Network

#### Configuring DVR Client Settings

From the initial main interface screen fig 3.2.1, locate the “Configure” menu at the top of the screen and left click once. Refer to the Alien Digital Video Recorder Operations Manual for details of setting up your network.

#### 3.2.4 Viewing cameras using preview screen

After the client software is configured (please refer to previous chapter), click the “Preview” button to display the to main interface screen as in Fig 12 above. Select a play window by left clicking on any of the grey screens displayed. The window should be highlighted. By then selecting and double left clicking a channel icon as shown in fig 13 the associated camera video stream will be displayed in window 1.

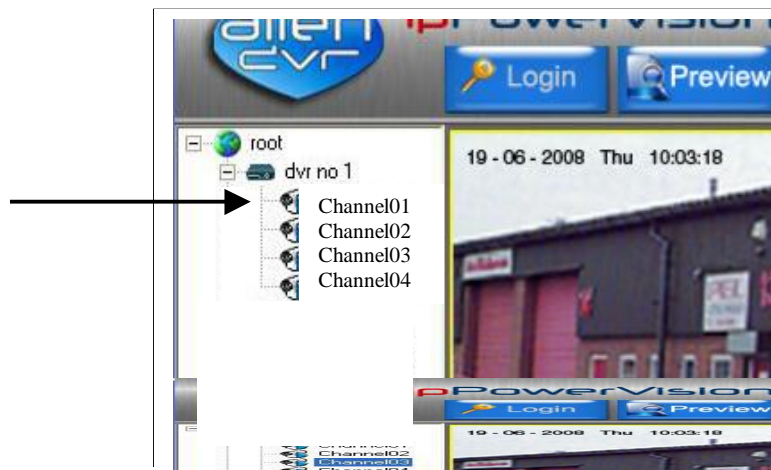


fig13



This can be repeated for each channel until all video streams are displayed.

To shut down any particular window move the cursor over that window, right click to produce a drop down menu and select “Stop”.

### 3.2.5 Preview in List or Group mode

At the bottom left hand corner of the Preview screen you will see the List and Group buttons fig 14.



fig 14

The List button allows you to view the DVRs and cameras you have made available to the system. As previously stated by default you should see the Alien DVR plus four cameras.

This software also allows additional DVRs to be setup so that they also can be viewed by this software. To add additional DVRs you need to enter the Configure menu fig 15.

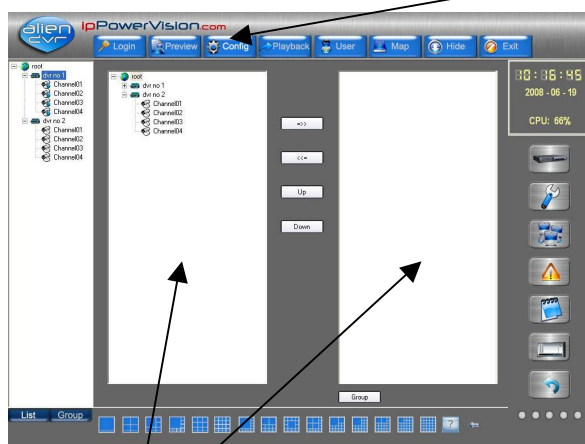


fig 15

The Group button allows you to create a Group name and then move selected cameras to this group. Use the central buttons to add or delete cameras. Now when switching to Group you will see the groups created. Select a group and this will be displayed.



### 3.2.6 Add Areas (accessing multiple DVRs)

This software allows multiple access to Alien DVRs and for ease of use you need to identify each DVR to a unique area name and specify the number of cameras associated and the unique username and password. To add additional areas click the Configure menu and then right click the top area icon. This is set to UK as an automatic default. This is the one in the left central box and the following menu will be displayed.

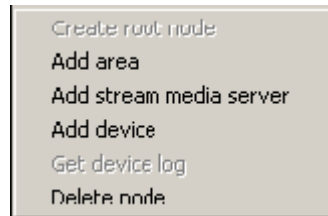


fig 16

If you now click the Add area you will be given a box to enter the new area name e.g Chesterfield. This will then allow you to add the DVR2 to the list of DVRs to be accessed on the left side of the screen. If you then right click the DVR2 icon you can then setup the Server Name which is DVR2, a unique user name and password, a unique Port number which should be one more than that used for the initial DVR, the DVR IP address and the number of channels on DVR2. If you wish to remove DVR2 then select Delete node. Note that you cannot enter more than 50 areas.

### 3.2.7 Display Formats



fig 17

At the bottom of the Preview screen you will see a list of screen formats fig 17/18

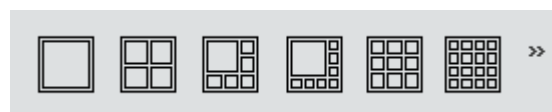


fig 18

If you click on the double right arrow the following extended list will be displayed fig 20.



fig 19

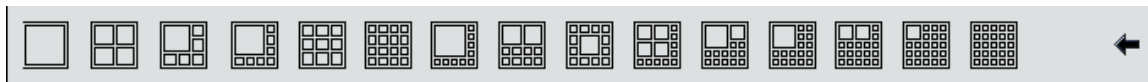


fig 20

### 3.2.8 Enlarge Camera Preview Window

Select an image and double click to enlarge window size, double click again to display it in full screen. Double click full screen window to restore multi-window screen mode.

### 3.2.9 Multi-window

Move the mouse to preview image, right click and select “Multi screen”. Double click mouse left button to restore.

### 3.2.10 Front page/Next page

If you disable “Cycle” play mode, you can select “Front page” or “Next page” in right menu to change preview cameras by hand.

### 3.2.11 Cycle the channel of one device or one group

If you right click the mouse in the channel being previewed, a dialogue box is displayed you can select “Start cycle” to start cycling the DVR channels (only one cycle for every DVR) fig 21. You can double click the channel on the left or click the “Stop” in the menu to stop cycling. (Note: the time interval of cycle is set in local configure)

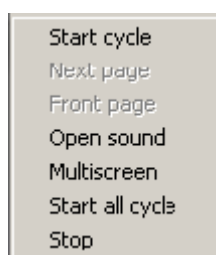


fig 21

Enter the Group display interface by selecting Group and select a channel that is being previewed and right click the mouse to display the menu below fig 22. Click on Start group cycle and each channel in the group will cycled. Double click the Group List on the left or click Stop to stop cycle.

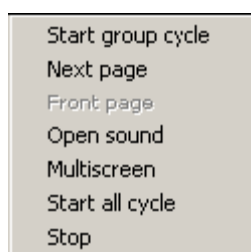


fig 22

3.2.12 Image Capture

Select a preview window and then click the “Capture” button to capture present image and save it in the configured PC path. You can setup picture saving path in “Local Setup” menu, refer to the chapter of “Local Setup”.

3.2.13 Setup Video Parameters

In network preview, you can adjust camera video parameters such as brightness, contrast, saturation and hue, etc. fig 23

Operation: Select a preview window, click “Video para” button, in the following setup interface (fig 24), you can adjust video parameters. Click “Default” to restore factory parameters.

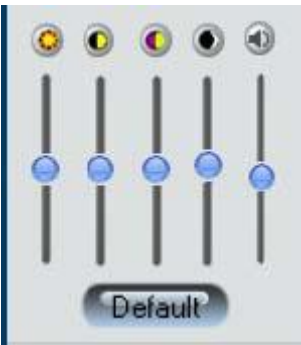


fig 23

3.2.14 Remote PTZ Control

First remotely setup DVR PTZ parameters.

Select a preview window, click “PTZ” button and in the following PTZ control interface (fig 24), you can remotely control the corresponding PTZ camera.



Fig 24

3.2.15 Control PTZ

Click PTZ icons to control direction, iris, focus, zoom, wiper and light.

NOTE: The up left, down left, up right and down right are currently not supported.

3.2.16 Adjust PTZ preset

You can select a preset in the preset list. On setting the first preset the user will be taken back to the preset list for the next preset.

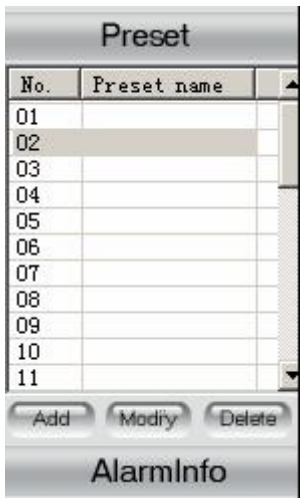


Fig 25

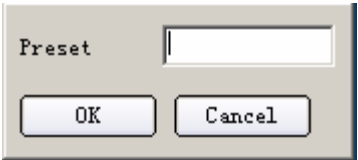


Fig 26

### 3.2.17 Set Preset

Click Preset to enter the preset setup interface.

#### Add Preset

After adjusting the preset select the number of the preset not previously allocated. Click Add and the box see fig 26 is displayed. Input name and press OK and this will be added to the list.

#### Modify Preset

Select a preset in the list see fig 25 and the box see figure 26 is displayed. Click OK to modify.

#### Delete Preset

Select a preset in the list see fig 25 and click Delete to remove it.

### 3.2.18 Setup Sequence

On the left side of client software main interface, right click camera name and the sequence page will be displayed. The menu displays the sequence number, Preset number, sequence time and speed. Click “add” to add sequence number, Click “OK” button to setup sequence time and sequence speed and Click “delete” button to delete sequence number.

Note: The PTZ must have this functionality installed.

### 3.2.19 Add stream media server

In Preview mode you can connect to the device directly or through a stream media server. Right click the node in the left window and select “stream media server” and the following interface shown in fig 27 will be displayed. Input the IP and port NO of stream media server, click “OK” to finish.

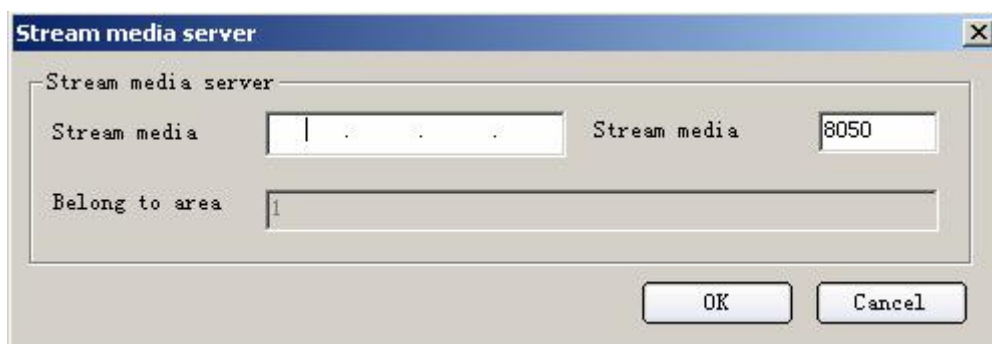


fig 27

Special Note: This is not a supported function on this DVR.

## 4. Configure

Before accessing DVR you must setup the configuration menu. Click on Configure and the menu below will be displayed fig 28.

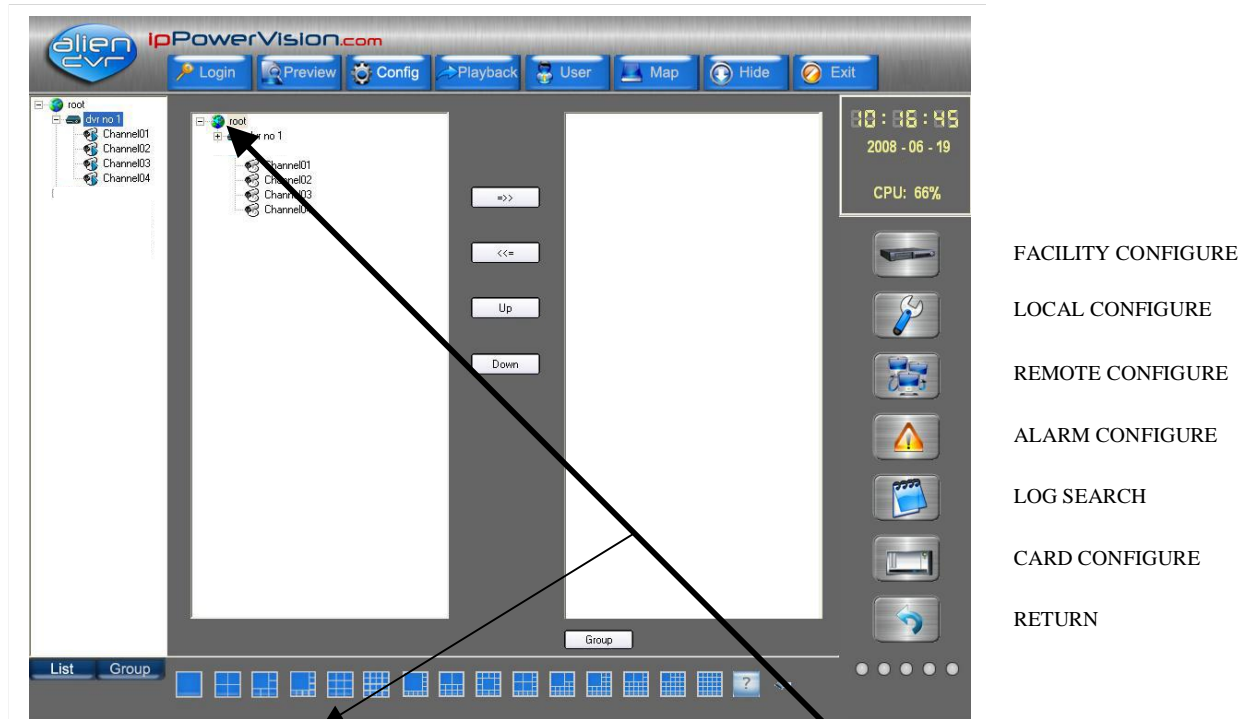


fig 28

### 4.1 Adding a DVR

#### Using a Static IP Address

This is the recommended or “normal way” of connecting to a device. If you right click the node in the left window and select “add device” the server properties menu shown below will be displayed fig 29.

The screenshot shows a 'Server Properties' dialog box with a 'Server Properties Configuration' tab. It contains several input fields and dropdown menus for configuring a server. The fields are: Server name (empty), Register (Normal), User name (admin), Port (8000), Multicast (empty), Belong to area (empty), and Serial (empty). The dropdown menus are: Server type (set to HC) and Channel (set to 8). There are also fields for Server IP, Password (masked with \*\*\*\*), and DNS IP. At the bottom right, there are 'OK' and 'Cancel' buttons.

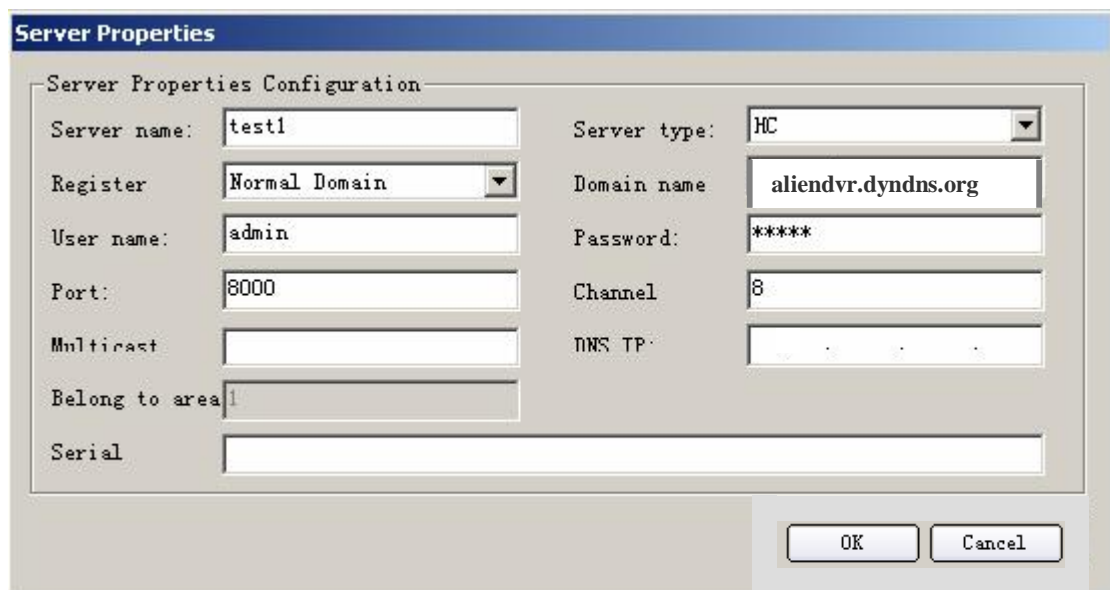
Fig 29

Configure the DVR server properties in this interface. Input the DVR server name, server IP, user name and password, DVR channels, server network port, server type, server multicast IP (optional facility) and DVR serial number.

The multicast IP is a D-class IP address between 224.0.0.0 to 239.255.255.255. The multicast IP in the client software and video server must both be the same. It can only be setup if the network protocol is MCAST. (Note: You can only add up to 50 devices)

### DNS Name

If connecting by a DNS name rather than a numeric IP address then change the drop down 'Register' box from Normal to Normal Domain. This will then allow you to enter a Domain name instead.



The screenshot shows a 'Server Properties' dialog box. The title bar is blue with the text 'Server Properties'. Below it is a subtitle 'Server Properties Configuration'. The main area contains several input fields arranged in two columns. The left column has 'Server name' (test1), 'Register' (Normal Domain), 'User name' (admin), 'Port' (8000), 'Multicast' (empty), 'Belong to area' (1), and 'Serial' (empty). The right column has 'Server type' (HC), 'Domain name' (aliendvr.dyndns.org), 'Password' (\*\*\*\*\*), 'Channel' (8), and 'DNS IP' (empty). At the bottom right are 'OK' and 'Cancel' buttons.

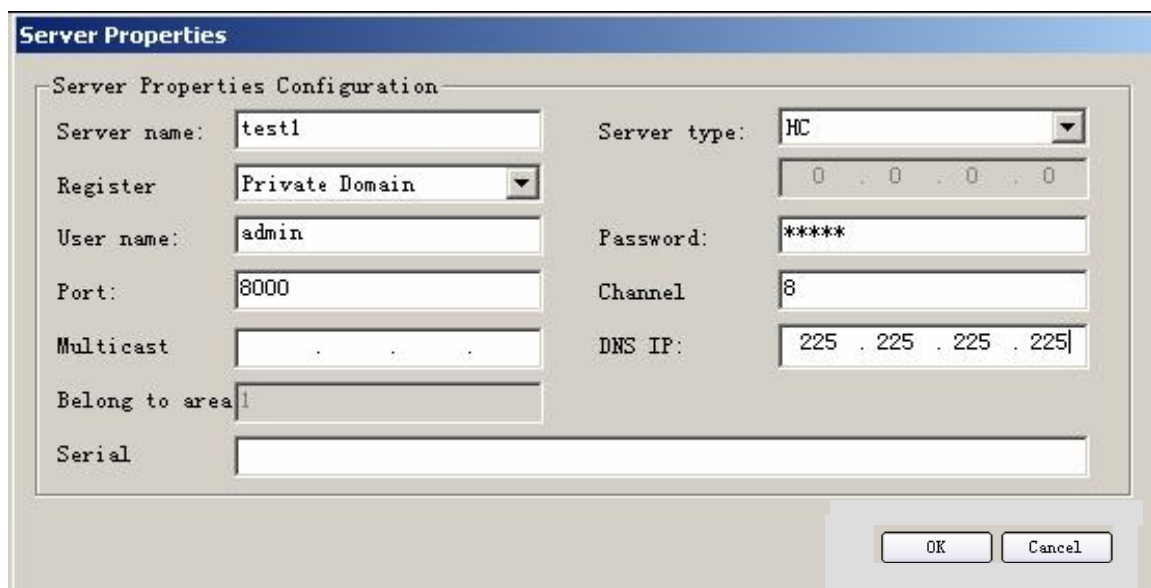
Fig 30

### Private Domain

If using a private network in your building with both a DHCP and a DNS server, you can connect to the DVR using an internal or 'private' name.

Selecting register by 'Private Domain' blanks out the IP address field so that the DVR acquires an address by DHCP so you should enter the DVR's name in the 'server name' field and register manually this name in your DNS records. See fig 31.

This is an advanced feature for use in larger environments where IT support is available.



**Server Properties**

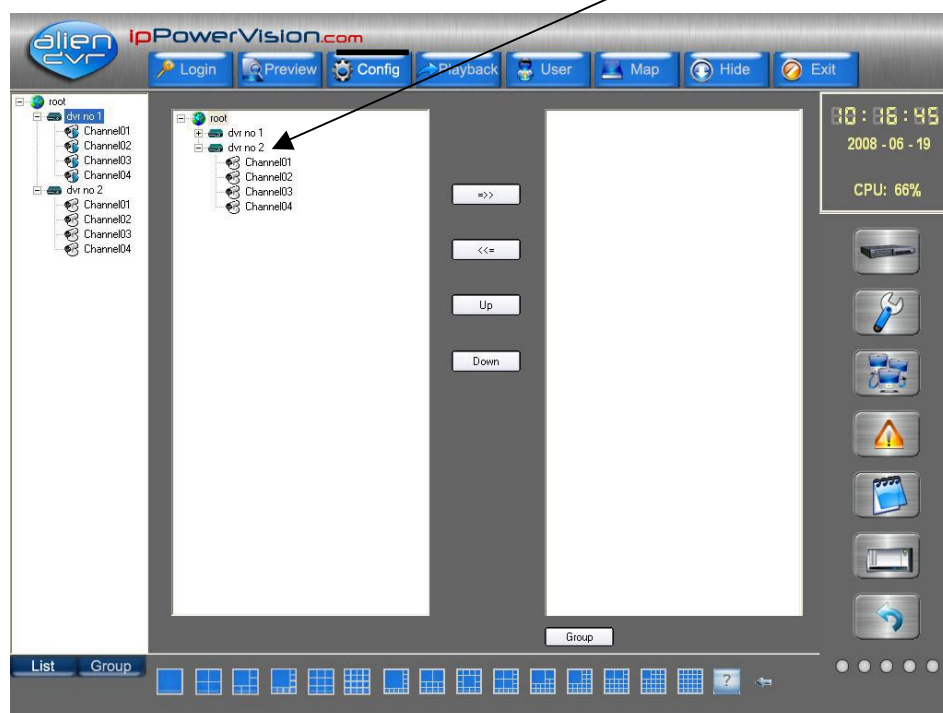
Server Properties Configuration

|                |                |              |                       |
|----------------|----------------|--------------|-----------------------|
| Server name:   | test1          | Server type: | HC                    |
| Register       | Private Domain |              | 0 . 0 . 0 . 0         |
| User name:     | admin          | Password:    | *****                 |
| Port:          | 8000           | Channel      | 8                     |
| Multicast      |                | DNS IP:      | 225 . 225 . 225 . 225 |
| Belong to area |                |              |                       |
| Serial         |                |              |                       |

OK Cancel

Fig 31

After configuration of the required option click on OK to add the server (see fig 32)



Facilty Configure

fig 32 Add server interface



## 4.2 Define network preview sequence

In fig 32, left column lists all DVRs and DVR channels. The right column lists the channel preview sequence. Select one DVR on left side, click “>>” button, all channels of the DVR will be moved to right column. Also select one camera on left side, press “>>” button to move the camera to right column.

Select one camera in right column, click “<<” button to move it back to left column. Click “Up” or “Down” button to change the preview sequence.

After setup, the sequence can be saved. See fig 33.

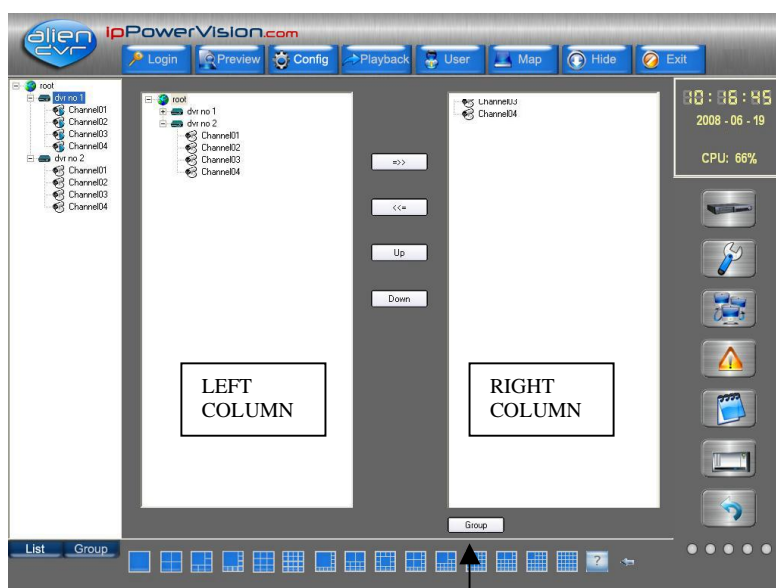


fig 33

Now click the Group button below the right window. If you have not previously created the group the following menu will be displayed.

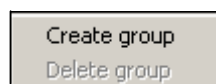


fig 34

If the Group has already been created the following menu will be displayed.

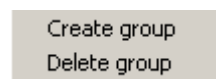


fig 35

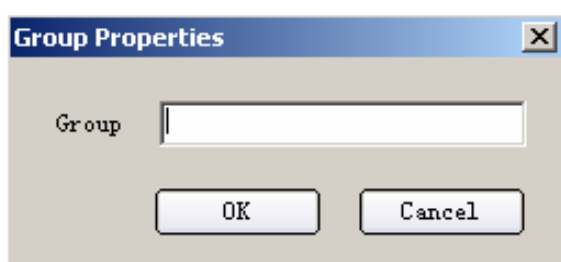


Fig 36

If the Group has not been previously created the box on the left will be displayed. Specify the new Group and then add camera channels as previously detailed.

Select one channel in the right column, if you click the “<<” button the channel will be deleted; if click the “up” or “down” buttons, the sequence of the channel will be adjusted, and the channel play sequence in the group network preview will also be adjusted.

### 4.3 Delete DVR Server

In left column of fig 33, select one DVR, then right click and select “delete node”. Press “OK” in the popup warning message box to delete the DVR and press “Cancel” to cancel deleting. If the DVR is deleted, the related DVR channels and channels in the group will also be deleted.

#### 4.3.1 Modify DVR parameters

In left column of fig 33, select one DVR and then double click. In the popup DVR properties dialog box, you can change the DVR properties. Click “OK” to finish modification. The related channel in the right window and group will be deleted.

#### 4.3.2 Modify channel properties and network preview protocol

In fig 33, select one channel and double click and the dialogue box shown in fig 37 can be modified with the new camera properties. Also you can select stream type (main stream or sub stream) and click “OK” after finishing.

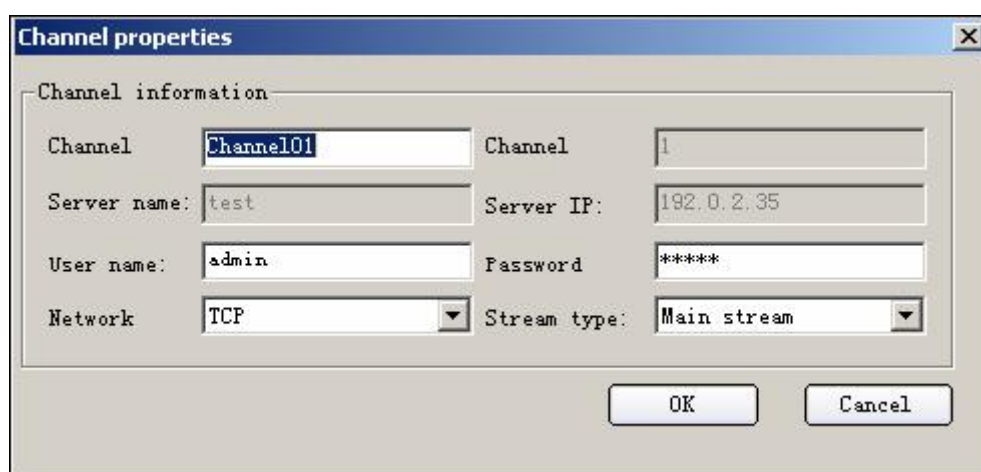
A screenshot of a 'Channel properties' dialog box. The dialog has a title bar with 'Channel properties' and a close button. Inside, there's a section titled 'Channel information' with a tabbed interface. The 'Channel' tab is active, showing fields for 'Channel' (text box with 'Channel01'), 'Server name' (text box with 'test'), 'User name' (text box with 'admin'), 'Network' (dropdown menu with 'TCP' selected), 'Channel' (text box with '1'), 'Server IP' (text box with '192.0.2.35'), 'Password' (text box with '\*\*\*\*\*'), and 'Stream type' (dropdown menu with 'Main stream' selected). At the bottom right are 'OK' and 'Cancel' buttons.

fig 37

Note: channel name, server name and server address can't be modified.

### 4.4 View DVR local log

In the device Configure interface, right click one device and select “Get device log” in the popup menu. Now select a device in the popup window and select server, type, start date and end date. Click “Search Log” and the client software will list the DVR local matched log information via the network. See figs 38/39. Click “Exit” to exit dialog box.

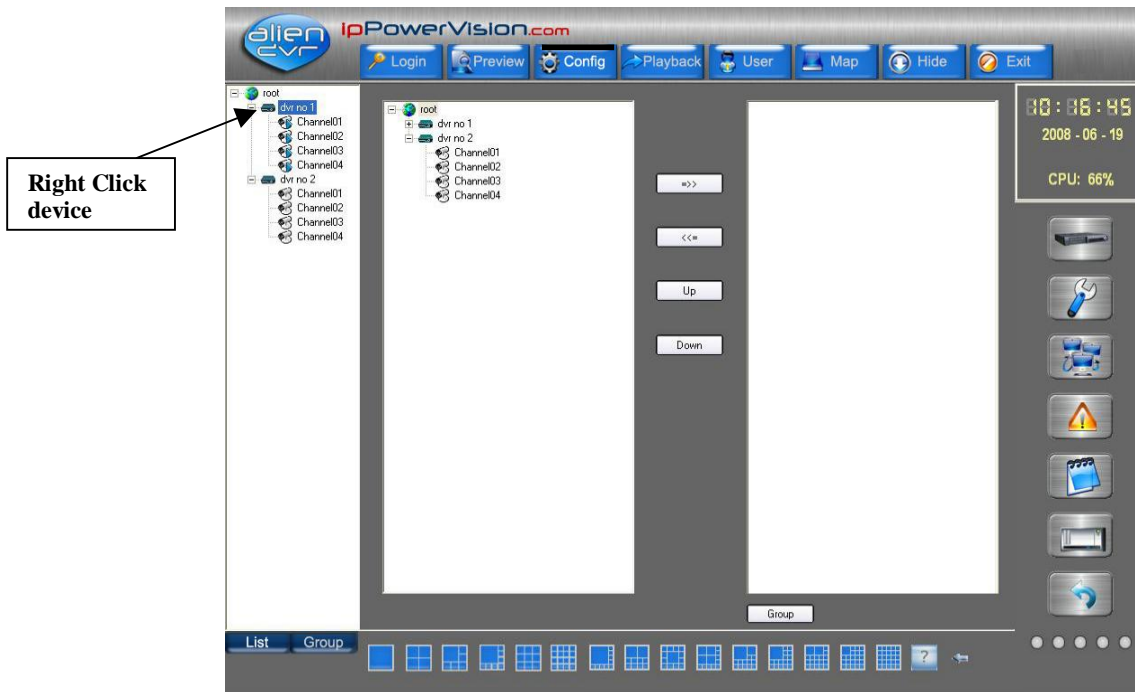


Fig 38

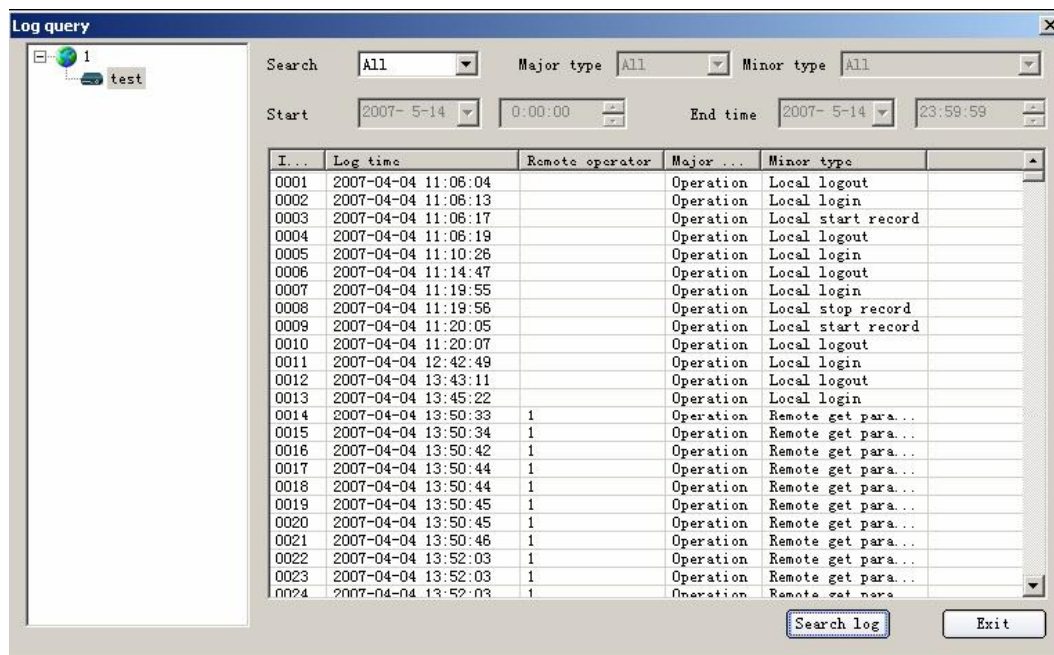
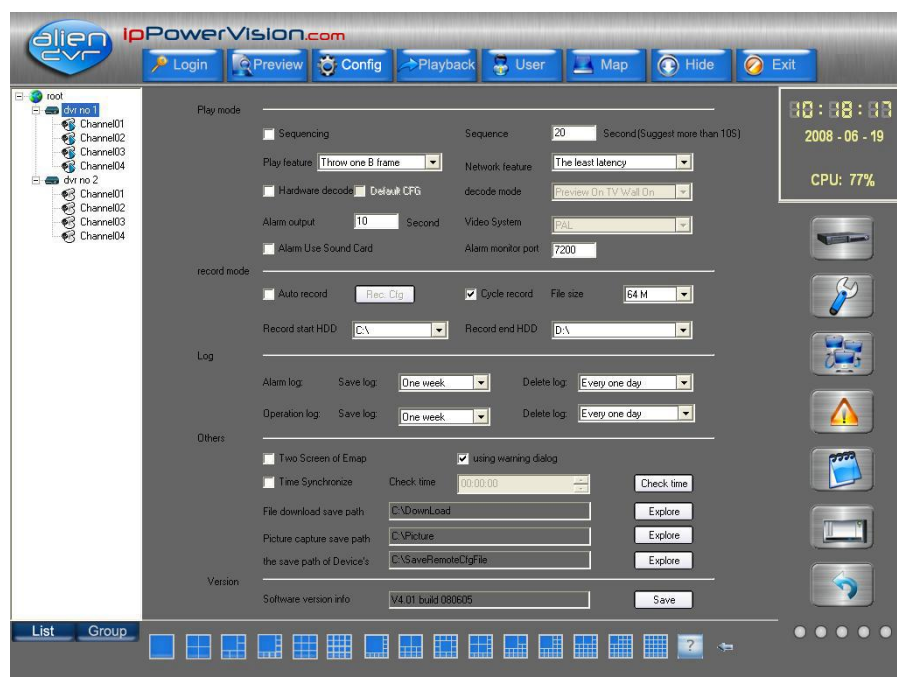


Fig 39

## 4.5 Client Software Local Setup

Local Configure setup includes preview mode, client record mode, check DVR system time, picture capture path, picture save path, etc. shown in fig 40.



Local Configure

fig 40

### 4.5.1 Play mode

You can select the following play mode:

- ⌚ ① Software decode but no cycle (sequencing) - default mode.
- ⌚ ② Software decode with cycle (sequencing) mode. You must input cycle time.
- ⌚ ③ Use hardware decode (select Hardware decode) without cycle (sequencing) mode.
- ⌚ ④ Use hardware decode (select Hardware decode) with cycle (sequencing) mode (select cycle play). Here you need to define “cycle play time”. We suggest the period is more than 20S (seconds). Hardware decode will turn digital video into analog video to build TV wall.

Hardware decode mode: preview with TV wall, no preview with TV wall.

Preview performance: “Throw no frame”, “Throw one B frame” and “Throw two B frames”.

Network performance: “The least latency”, “The best Realtime”, “Less latency, more fluency”, “The most fluent”.

The alarm output delay time is between 5s to 100s.

### 4.5.2 record mode

Client software can save the live stream from DVR via network.

Please select recording start HDD and end HDD.

If you enable “Cycle recording”, when there is no space in PC HDD, client software will

start to overwrite the earliest recorded files.

Record mode includes:

- ⌚ ☐ Manual recording, no cycle mode (default)
- ⌚ ☐ Manual recording and cycle mode (select)
- ⌚ ☐ Auto recording and no cycle mode (select)
- ⌚ ☐ Auto recording and cycle mode (select)

Recording file size: This refers to the file size recorded to the PC. Select from 32M, 64M, 128M and 256M.

If you select auto recording mode, you must setup recording schedule setup dialog box in record menu.

Auto record:

Enter “local configure” interface, select the record schedule.

First select “record mode schedule” to setup 4 record periods

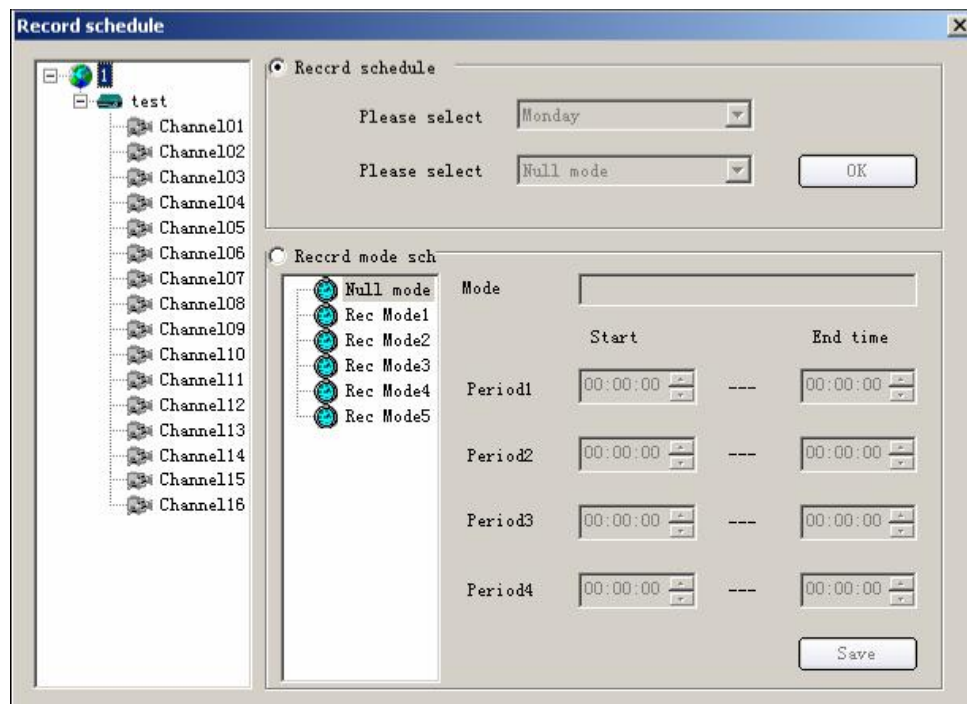


fig 41

Manual record

If the auto record is disabled, you can start/stop some channel recording manually whilst in live preview.

Operation: select one channel that is being previewed and click “record”, the record button will become blue, start recording, click “record” again. The “record” button goes to default colour and stops recording.

Note : when the client software does cycle record, it will start to delete files if the capacity of every hard disk is less than 2GB; if not cycle recording, it will stop recording if the capacity of every hard disk is less than 2GB.

### **4.5.3 Log**

In the “Save log” list, Select the save time of “Alarm log” and “operation log”, you can select one year, half a year, three months, one months, half a month, one week.

In the “Delete log” list, you can select the interval to delete the “Alarm log” and “Operation log”, select every three months, every month, every half of month, every one week, every three days, everyday.

Note: the save log time must be longer than delete log time, otherwise, the software will popup alarm information and the parameters will not be saved.

### **4.5.4 Others**

Check DVR system time:

Enable “Check DVR system time” and setup detail time. When the time is reached, client software will send current PC system time to DVR via network. The DVR will adjust the system time to be the same as the PC.

Download file saving path:

The client software will save the DVR downloaded files in this path.

Image capture saving path:

The Client software will save the captured image in this path.

### **4.5.5 Version Info**

Records the release time of the client software.

## 4.6 Remote Configure

**NOTE: THIS REMOTELY CHANGES THE SETTINGS IN THE PHYSICAL DVR.**

Using the client software you can configure the parameters of the DVR, DVR channels, Communications, Alarm, User, Transmission and Others. The DVR server type is HC for the Alien. Click the “Remote Configure” button whilst in the Configure mode, to enter into the remote configure interface.

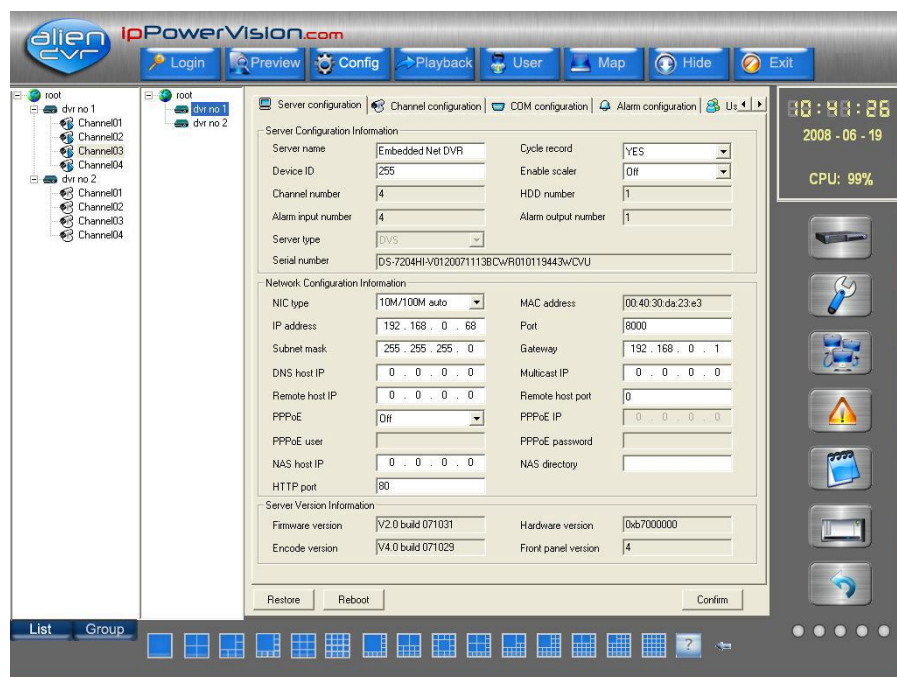


fig 42

### 4.6.1 Server configuration

#### Server Configuration Information

**Server name:** Enter DVR name - not more than 32 characters.

**Device ID:** The largest number is 255 if the firmware is 1.5 or above.

**Cycle record:** To overwrite when the HDD is full select “YES” otherwise select “NO”.

Channel number, HDD number, alarm input number, alarm output number, server type, server serial cannot be modified.

#### Network configuration information:

**NIC type:** Here are some options such as 10M/100M auto and so on.

**IP address:** Enter IP address of DVR – example 192.168.001.100 (**DO NOT ENTER STATIC IP HERE AS THIS REPLACES THE IP IN THE DVR**)

**Port:** Enter port address – Default address = 8000

**Subnet mask:** Defines network size – normally set to 255.255.255.000

**Gateway:** Enter the Gateway address of the modem/router – example 192.168.001.001

**DNS host IP:** Only enter the DNS server IP if using the Private Domain option.

**Multicast IP:** If you use the multicast option, you must input a D-class IP between 224.0.0.0 to 239.255.255.255.

**Remote host IP and port:** IP and port of the PC receiving alarm information.

**PPPoE:** If you want to use PPPOE dial up function select PPPoE and input user/password.

**NAS host IP and NAS directory:** If using a network store server, input the NAS IP and the directory.

**HTTP port:** Web port using access via IE - normally set to port 80

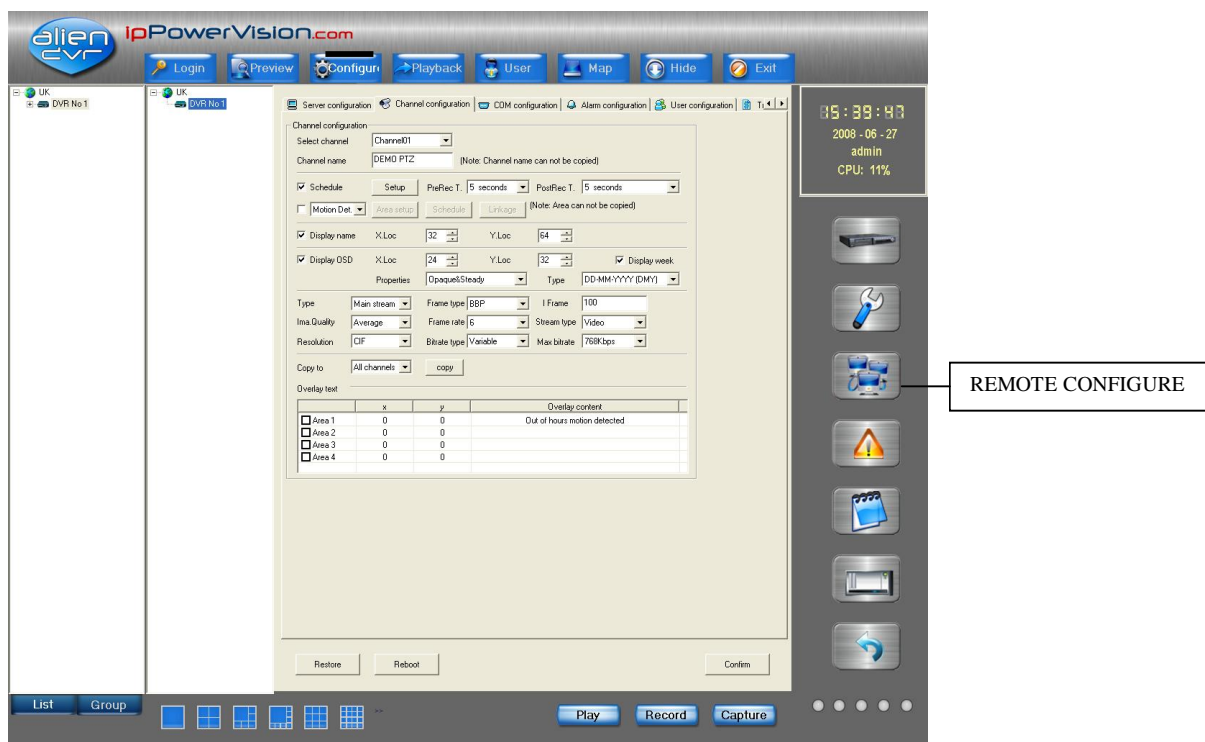


The MAC address and PPPoE IP cannot be modified.

### Server version information:

Firmware version, Hardware version, Encode version and Front panel version cannot be modified. After the configuration is finished, click “confirm”. In order that network information is applied you will need to reboot DVR. Just click the “Reboot” button.

## 4.6.2 Channel configuration



**Select channel:** Select one channel of the DVR.

**Channel name:** Enter channel name up to 32 characters.

Tick “Schedule” box, you can setup the Record time, PreRecord time and PostRecord time.

Click “Setup” button to enter into recording schedule setup dialog box. See below fig 44.

### Schedule Setup (Record schedule setup)

Select record mode and if selecting Record all day, only record type can be setup with no time periods.

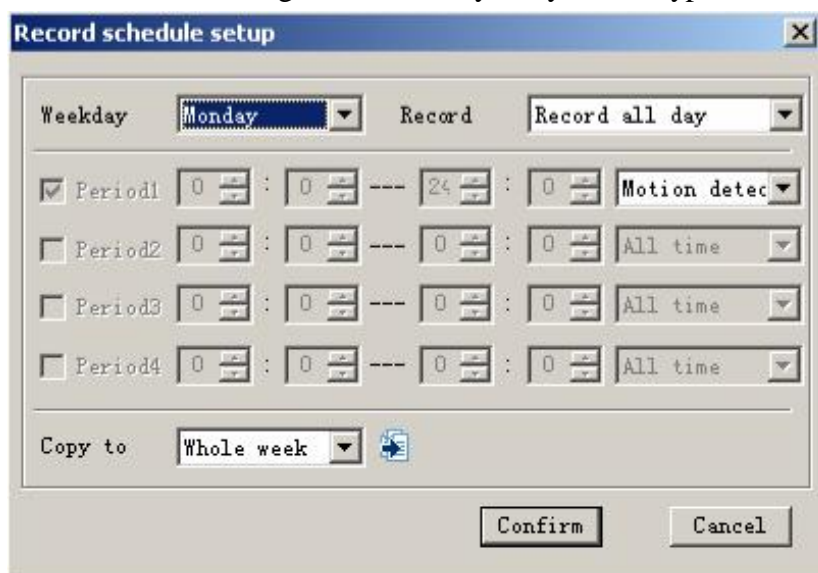


fig 44

If selecting Record based on period, you can set up to four periods in any 24 hour period. Ensure that the times do not overlap. You can select the Record Type from the dropdown list: All time, Motion Detection, Alarm Rec, Motion|Alarm, Motion&Alarm and Command.

### Motion Detection

Tick “Motion Det” box and then select from Motion Det (Area setup, Schedule & PTZ link enabled), Video Lost (Area setup, Schedule & PTZ link disabled), View Tamp (Area setup, Schedule and PTZ link disabled) and Privacy Mask (Area setup enabled).



fig 45

### Area Setup

Set motion detection area: Enable “Setup motion areas” option, press PC keyboard **【Ctrl】** key and move mouse to preferred point, press mouse left button and drag mouse. You can draw one motion area and release mouse to confirm one motion area. You can draw many areas for motion detection, draw 4 areas for privacy mask and one area for view tampering alarm. Select sensitivity: for motion detection you can select seven sensitivity options such as Close, 0 -- Minimum, 5 – Maximum. For the view tamping alarm you can select four options, these are close, low, normal and high from left to right.

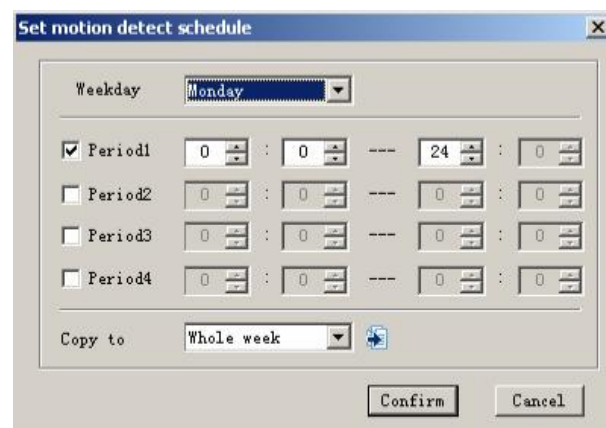


fig 46

### Schedule – Motion Detect

This is similar to the Schedule for continuous recording allowing four periods in a 24 hour day.

### PTZ link

The PTZ link is enabled in the period of the schedule.

Click “PTZ link” to enter into PTZ link configure interface, shown in fig 47.

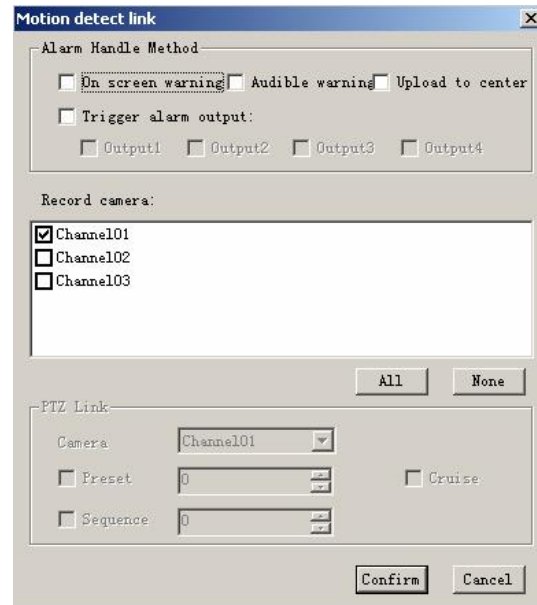


fig 47

Select trigger record channel: it can be only one or more.

**Alarm Handle Method:** select the PTZ handle method of this channel, it can be one method or more.

After setup, click “Confirm” button to save configuration and return. Click “Cancel” button if do not want to save configuration.

After parameter setup, click “Confirm”. If the DVR needs to reboot, click the “Reboot” button.

(Note: the information and channel name in all time record, motion detection record, video loss, privacy mask, and view tampering cannot be copied to other channels)

**PreRecord:** Set to capture recording prior to start of alarm/motion recording. Select from the following: No PreRecord, 5 seconds, 10, 15, 20, 25, 30 seconds and Maximum.

**PostRecord:** Set to capture recording after alarm/motion stops. Select from the following: 5 seconds, 10, 30 seconds, 1 minute, 2, 5 and 10 minutes.

**Display name:** Allows you to position the channel name on the display page.

**Display OSD:** Allows you to specify the position of the time and date.

**Properties:** You can select whether to display week etc using the following modes (opaque&steady, opaque&flashing, transparent&steady, transparent&flashing or no display).

**Type:** Main Stream or Sub Stream (Sub Stream not operational on this DVR).

**Frame type:** BBP and Only P can be selected.

**Iframe:** Total frames on this DVR.

**Image:** Image Quality - 6 options (only effective for variable bit rate type) Select from Highest, Higher, High, Average, Low and Lowest. The higher the quality the more HDD storage space required.

**Frame rate:** Full (PAL: 25FPS NTSC: 30FPS), 20, 16, 12, 10, 8, 6, 4, 2, 1, 1/2, 1/4, 1/8, 1/16. (Note: 15, 18 and 22 are special options and only some DVRs use these.)

**StreamType:** If you select Main Stream in the channel properties interface and both the video and audio are required, please select “Video&Audio”, else select “video”.

**Resolution:** Default is CIF but can also use QCIF which is one quarter of CIF. Other options do not apply on this DVR. Only QCIF or CIF can be selected.

**Bit rate type:** Variable or Fixed can be selected.

**Max bit rate:** You can select 32kbps, 48kbps, 64kbps, 80kbps, 96kbps, 128kbps, 160kbps, 192kbps, 224kbps, 256kbps, 320kbps, 384kbps, 448kbps, 512kbps, 640kbps, 768kbps, 896kbps, 1Mbps, 1.25Mbps, 1.5Mbps, 1.75Mbps, 2Mbps and Self-definition.

**Copy to:** You can copy this page setting to All channels or to channels 1 ~ 4. Press copy button after setting.

**Overlay text:** You can overlay text on the channel, 4 lines maximum, 44 characters maximum for each line.

If setup complete, click “Confirm” button to return. Click “Cancel” to return if you do not want to save the configuration.

### 4.6.3 COM configuration

Select “COM configuration” in the Remote Configure interface, shown below in fig 48. In this interface, you can setup the RS232 and RS485 parameters.

Note: This DVR does not provide RS232 connectivity.

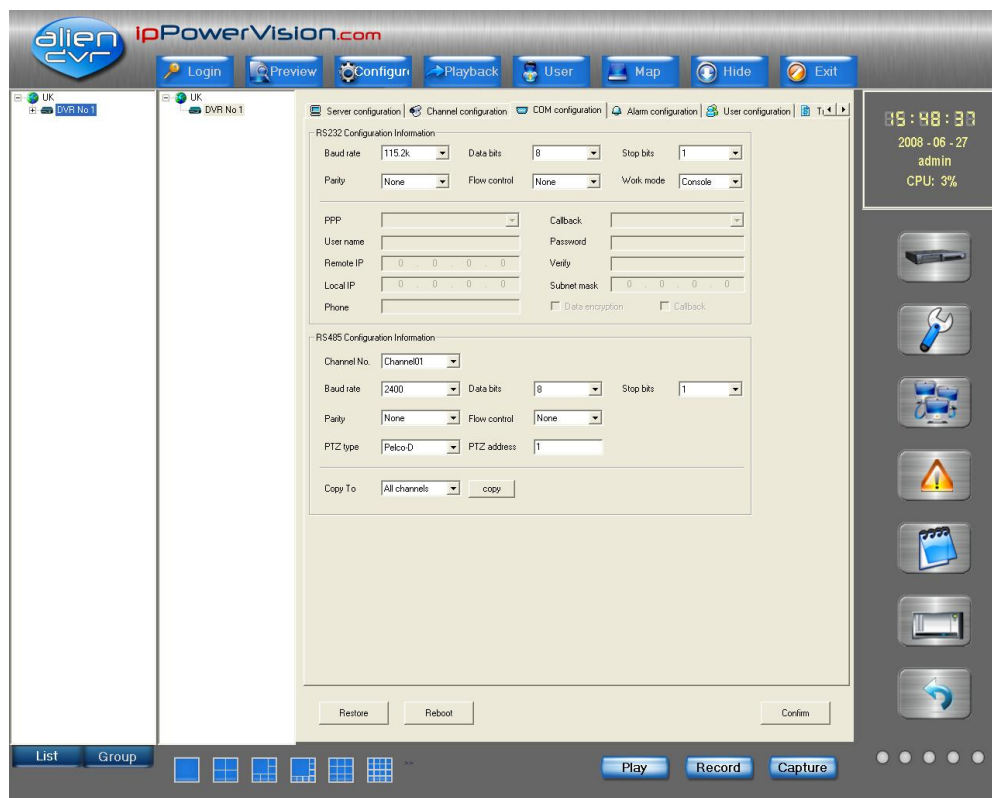


fig 48

### RS485 Configuration Interface

**Channel No:** Enter the respective channel number.

**Baud Rate:** Enter the Baud Rate of the PTZ camera. Select from the following: 1200, 2400, 4800, 9600, 19200, 38400, 57600, 76800, 115.2k. (Default 2400).

**Data Bits:** Select from 5, 6, 7, 8. (Default 8)

**Stop Bits:** Select from 1 or 2 (Default 1)

**Parity:** Select from None, Odd or Even. (Default None).

**Flow Control:** Select from None, Software or Hardware. (Default None)

**PTZ type:** Select from list fig 49 on next page.

**PTZ address:** Enter address set in PTZ camera.

**Copy to:** All channels, channels 1 – 4.

After the configuration, click “Confirm”. If need to reboot the DVR, click “Reboot” button.

## PTZ Protocol List

|              |               |             |              |
|--------------|---------------|-------------|--------------|
| A01          | HN_4304       | NAIJIE      | Tc Pelco D   |
| ACES         | HNDCB         | NetStreamer | Tc Pelco P   |
| ADR8060      | Howell        | NK08G       | TDWY         |
| ALSON        | HUNTER        | NK16        | TECHWIN      |
| ANTEN        | HY            | Panasonic   | TLHHX-2000   |
| AUTO-H       | Infinova      | PARCO       | TLPelco-p    |
| AUTO-M       | INV3609HD     | PE60        | TWHC         |
| BBV          | JC-4116       | Pelco-D     | TX_CONTROL_2 |
| CAT_KING     | Kalatel_312   | Pelco-dWX   | USNT         |
| CELOTEX      | KC33605       | Pelco-P     | VCL_SPEED_DO |
| CHANGLIN     | KLT_NDV2200PS | Philips     | VCOM-VC-2000 |
| DaLi         | KTD-348       | PIH-7625    | VIDEOTEC     |
| DeltaDome    | LC-D2104      | PLD         | VID0_B01     |
| DEMO-SPEED   | LCU           | RED_APPLE   | WEIHAN       |
| DennardDome  | LG            | RM110       | XYM-12       |
| DH-CC440     | LG-MULTIX     | SAE/YAAN    | YH-06        |
| D-MAX        | LiAo          | SAE-QUICK   | YouLi        |
| DM-DynaColor | LiLin         | Sample      | YT_PELCOD    |
| DM-PELCO-D   | Lilin-820     | Samsung     |              |
| ENKEL        | Lion_2007     | SP9096X     |              |
| EVI-D30      | M_MV2050      | ST_2C160    |              |
| HD600        | M_PANEL       | ST_832      |              |

fig 49

### 4.6.4 Alarm Configuration

Select “Alarm configuration” in the Remote Configure interface. You can remotely setup DVR sensor alarm parameters and the exception parameters. NOTE: In order to initiate the alarm activity you must set the On Guard option by right clicking on DVR. See fig 50.

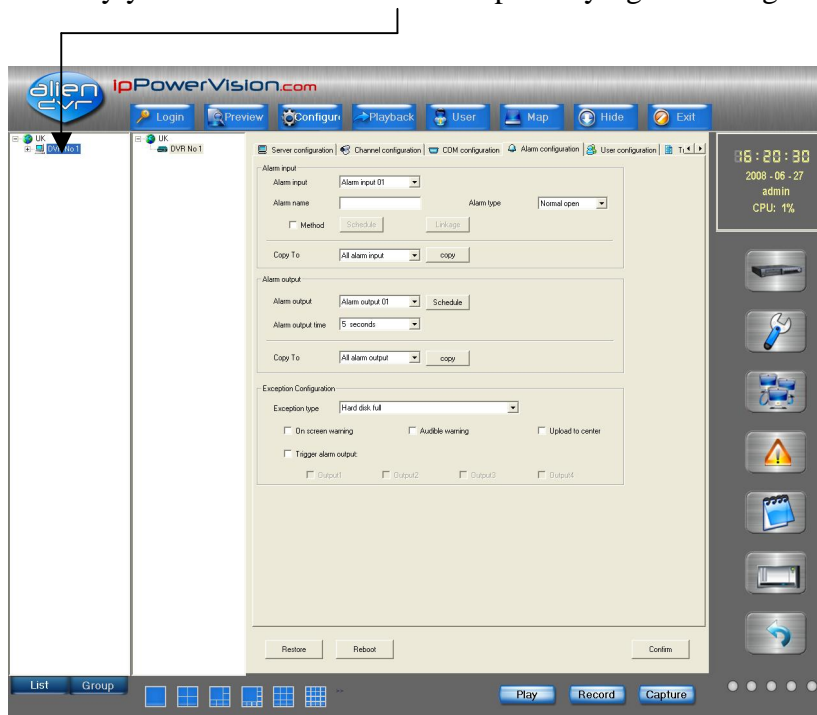


fig 50

**Alarm Input:** Enter alarm input 01 – 04.

**Alarm name:** Allows a unique name to be entered.

**Alarm type:** Set to Normal open or Normal close.

Tick Method box to highlight Schedule and Linkage buttons.

**Schedule:** Set alarm input schedule. Select day time period. You may set up to four time periods in one 24 hour period.

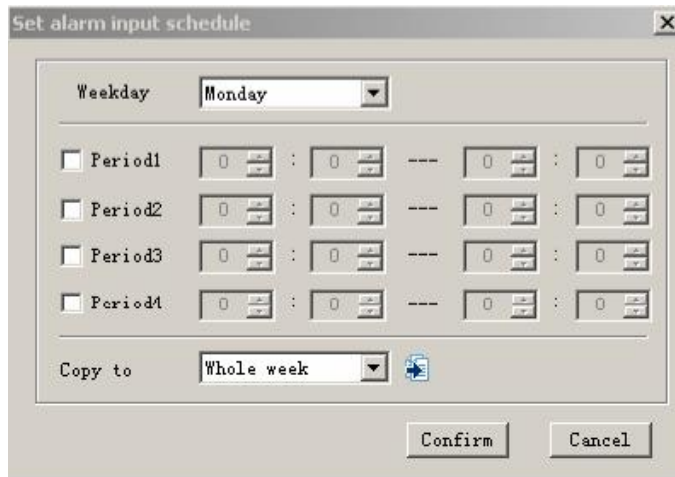
The dialog box is titled "Set alarm input schedule". It features a "Weekday" dropdown menu currently set to "Monday". Below this, there are four rows for "Period1", "Period2", "Period3", and "Period4". Each row contains two time selection fields (HH:MM) separated by a colon and a "Copy to" dropdown menu. At the bottom, there is a "Copy to" dropdown menu set to "Whole week" and a small icon. "Confirm" and "Cancel" buttons are at the bottom right.

fig 51

After completing schedule click “Confirm” button and return. Click “Cancel” if don’t want to save the configuration.

Click “PTZ link” to enter into the alarm input link interface. See fig 52.

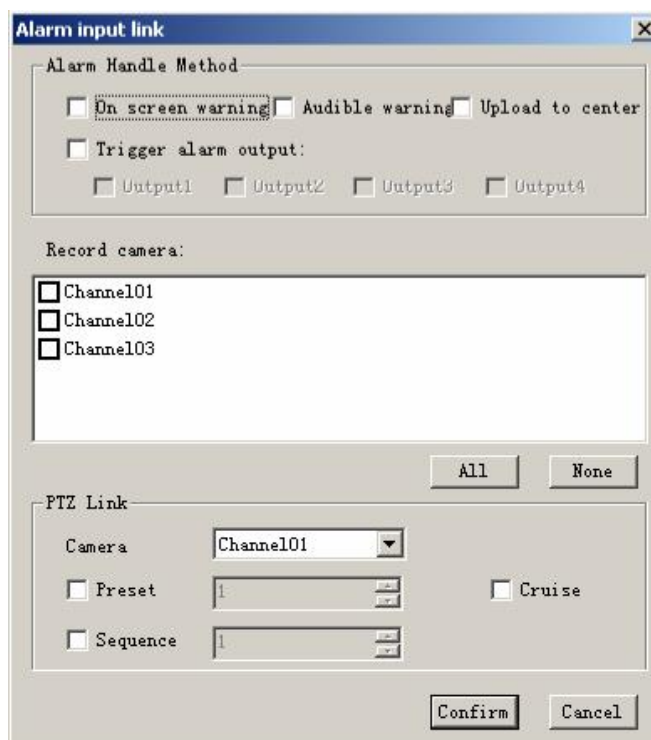
The dialog box is titled "Alarm input link". It has an "Alarm Handle Method" section with checkboxes for "On screen warning", "Audible warning", "Upload to center", and "Trigger alarm output:". Below "Trigger alarm output:" are four checkboxes for "Output1", "Output2", "Output3", and "Output4". The "Record camera:" section has a list box containing "Channel01", "Channel02", and "Channel03". Below the list box are "All" and "None" buttons. The "PTZ Link" section has a "Camera" dropdown menu set to "Channel01", and checkboxes for "Preset" (with a value of 1) and "Sequence" (with a value of 1). There is also a "Cruise" checkbox. "Confirm" and "Cancel" buttons are at the bottom right.

fig 52

This menu allows a link to a PTZ camera connected to a specified channel.



**On Screen Warning:** Provides an onscreen warning at DVR.

**Audible warning:** Provides an audible warning at DVR.

**Upload to centre:** Provides warning sending to Remote IP and Port.

**Trigger Alarm Output:** Sends an output alarm trigger to DVR.

**Record Camera:** Tick camera channel required or All.

### PTZ Link

**Camera:** Specify camera channel to initiate PTZ activity.

**Preset:** Tick to specify if alarm initiates PTZ move to a preset number. Enter number.

**Cruise:** Tick to initiate a cruise/tour/patrol.

**Sequence:** Tick to specify requirement to enter a cruise/tour/patrol sequence number. Enter number.

After completing the configuration click “Confirm” to save the configuration and return or click “Cancel”.

Returning to the Alarm configuration menu – Alarm output section.

**Alarm output:** Only one alarm output provided on this DVR.

**Schedule:** Click on Schedule to display the Set alarm output schedule fig 53.

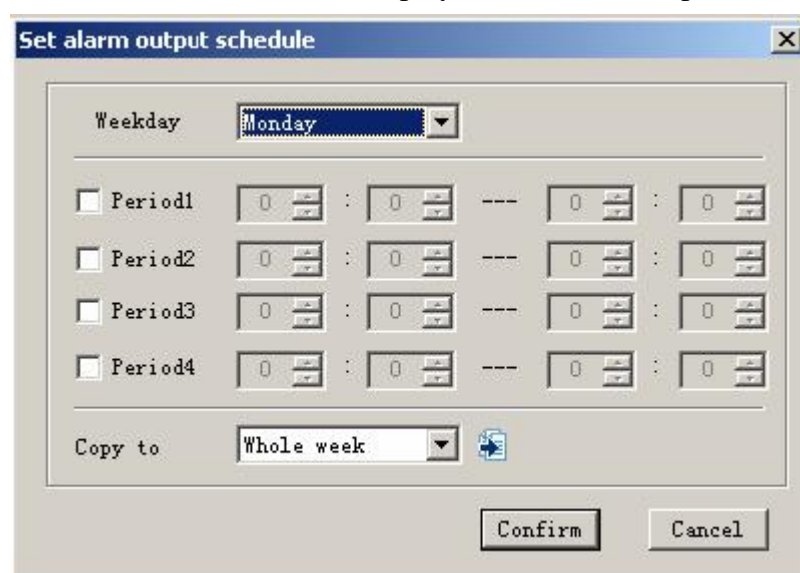


fig 53

After completing the setup, click the “Confirm” button to save configuration and return otherwise click “Cancel”.

### Exception Configuration

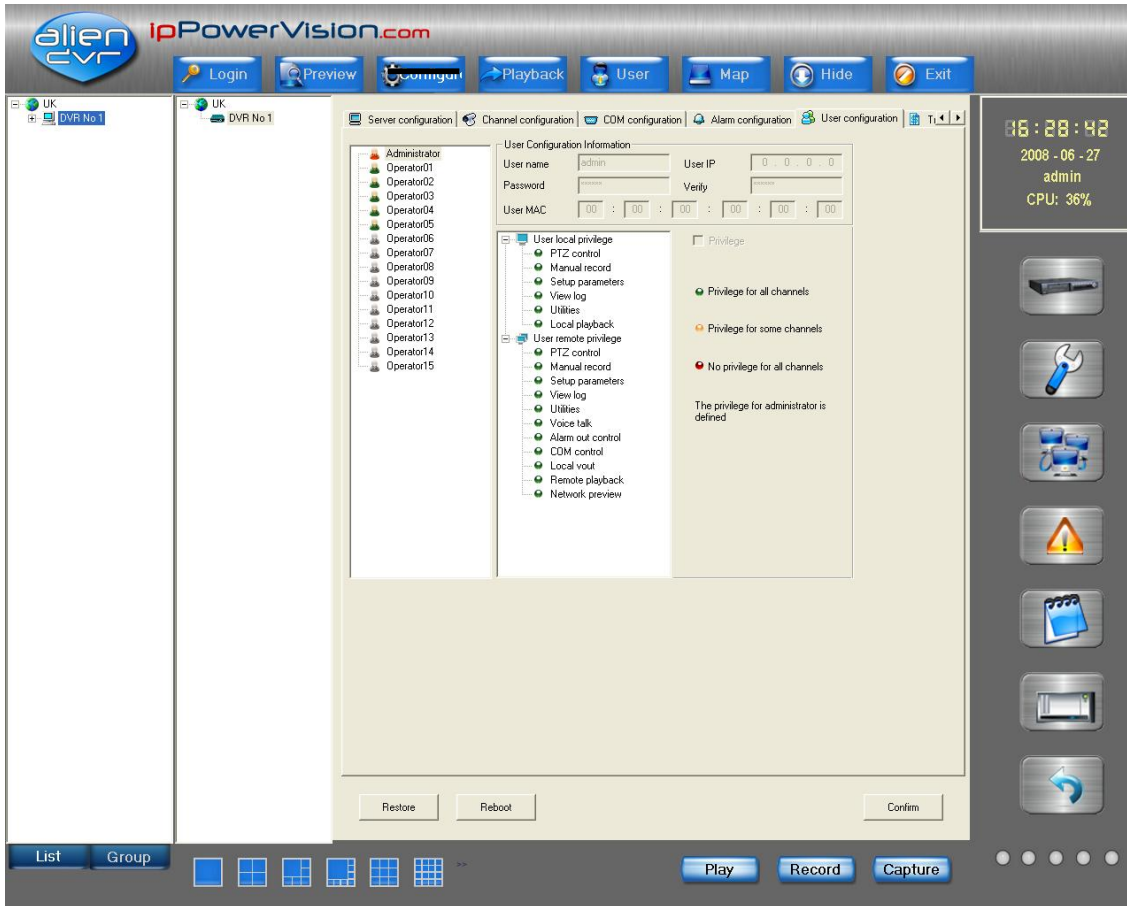
This allows alarms to be set for exception events.

**Exception type:** This allows alarms on the following events: Hard disk full, Hard disk error, Network error, IP address conflict, Illegal access and NTSC/PAL differ.

Tick if you require On screen warning, Audible warning and Upload to center. Then tick **Trigger alarm output**. The Output 1 will then be selected.

#### 4.6.5 User configuration

In the Remote configure interface select “User configuration”. See fig 54.



REMOTE CONFIGURE

Fig 54

In this menu you can remotely setup DVR users, including username, password, user rights, etc. Look at the user rights when you select the user.

If the user exists, right click the user and click “modify” in the popup menu. Select “Cancel” to return.

After completing, click Confirm and “OK” the Save Parameters box. Please reboot DVR to make the new parameters effective.

#### 4.6.6 Transaction configuration

Although the software provides an option to receive credit card number details from an ATM machine linked through a network or serial port and the card number overlaid on live video on record and playback, this option is not supported.

#### 4.6.7 Others

In the Remote configuration setup, select “Others”, showed as fig 55.

User can remotely upgrade server or format Hard Disk in this interface.

Select “Remote upgrade”, single click “Browser”, select upgrade file. Click “Upgrade” to begin upgrade process. After the completion of upgrade, status tray will show “Status: Server Upgrade finish”.

Select “Format Hard Disk”, select the disk ( this DVR only allows one drive to be installed) and single click “Format”. The system will indicate that Format is being processed. After the process completes it will indicate “Format Hard Disk Successful”.

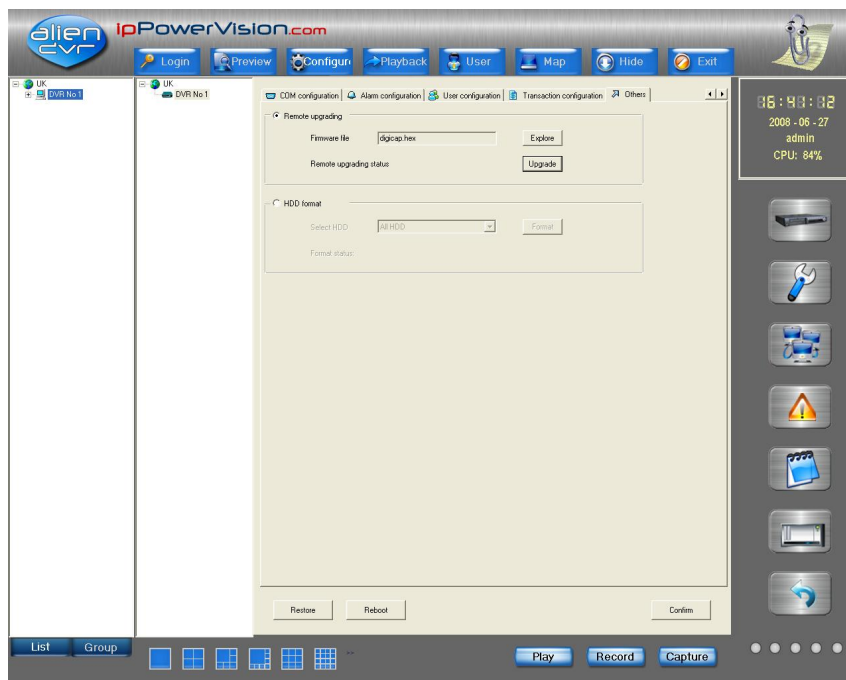


fig 55

NOTE: After the formation of hard disk, a reboot of the equipment is required. No other operations are allowed during the format process.

## 4.7 Alarm configure

Alarm linkage is mainly used for completing the linkage of different alarm types.

### 4.7.1 Alarm Linkage

In the Playback mode, right click the DVR equipment name to set up or remove alarm defense; if the menu shows “On Guard” to setup defense, it means the device is not in the status of defense; otherwise if the menu shows “Cancel Guard” the alarm linkage function is activated. See figs 56/57. (NOTE: there are no setup or remove defense operations in the Group mode).



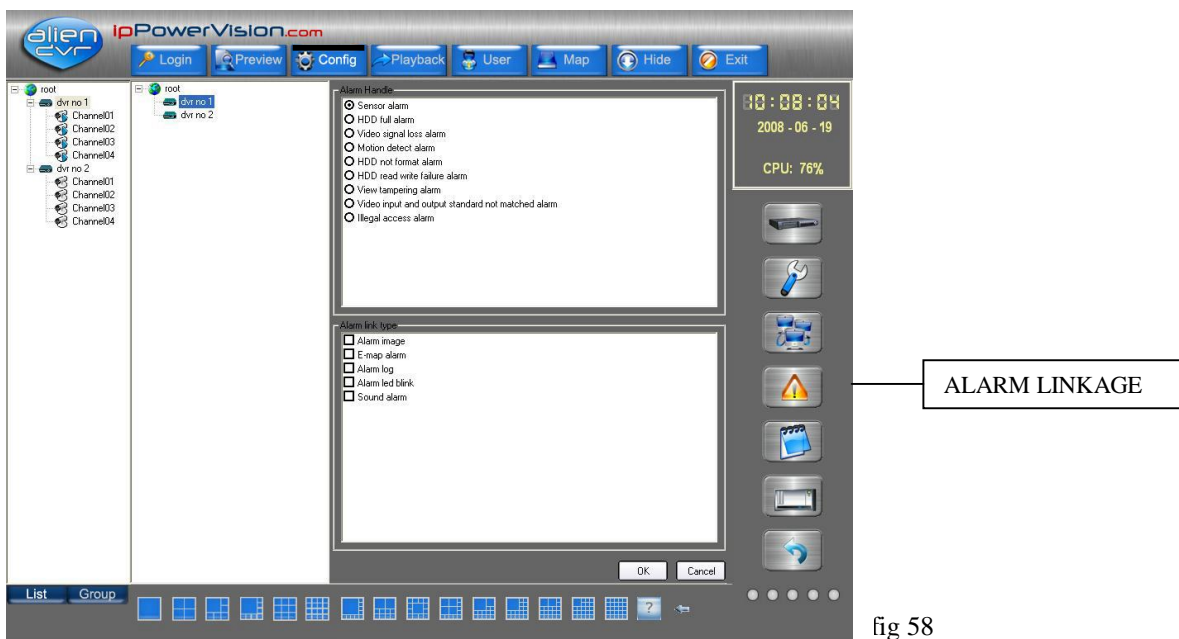


fig 58

#### 4.7.2 Alarm Linkage button

In the middle of the interface, select one device from the list, the alarm type and alarm linkage type status can still be edited. Select one alarm type and in the Alarm link type box will be displayed the current selected configured alarm linkage types. User can select or cancel alarm linkage types. Finally, click “OK” to save the modification or Cancel to return.

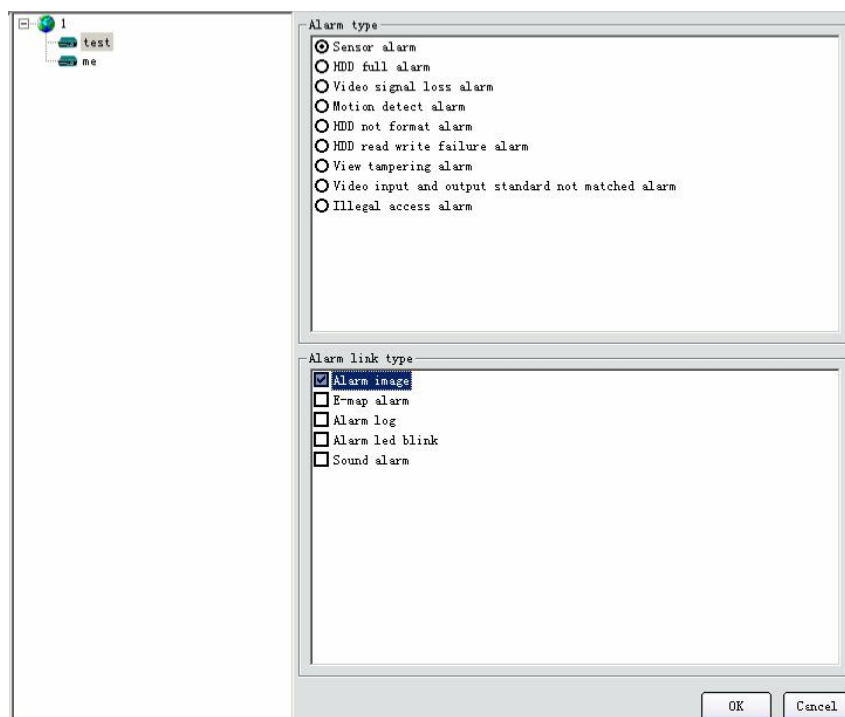


fig 59

Select Pop-up image when alarm triggers as per example shown below fig 60. When receiving multi-alarms they will queue according to order.



fig 60

If you select the electronic map alarm linkage, when you receive an alarm message, the corresponding hot spot channel will flash and the user can click the flashing hot spot to confirm acknowledgement. The system will then consider the alarm as being dealt with.

If you select the alarm log linkage, when you receive an alarm message, the alarm message list on the main interface will show the corresponding alarm information. If you double click any alarm message, the detailed information of that alarm will be displayed as a message.

If you right click any alarm message, it will show a dialogue enabling you to clear the alarm information list. When the number of alarm messages reach 5000, the system will automatically clear all the alarm messages.

If you notice an alarm indicator light flashing in the main interface as shown below see fig 61, click to check the alarm message and the system will cancel the flashing alarm. The first light indicates “signal alarm”, the second light indicates “motion detection alarm”, the third “signal missing alarm or shelter alarm”, the fourth light indicates “all the other alarms.”



fig 61

NOTE: After devices are setup, only after you have specified alarm linkage type will the above alarm indicator light show.

## 4.8 Local Log

Select the “Local log” icon to enter into Search Log menu.

Select area, DVR server or channel in the right tree, select the log type, start time and stop time. Click search icon, the related log will be listed. Shown as fig 62.



Click the list on the left, the log can be displayed day by day. After search log is finished, click other button to return.

## 4.9 Card Configure

This option allows recording of card numbers from a linked ATM to be displayed on recordings and in playback. Although software is available this option is not supported.

## 4.10 Return

Click this icon to return to Preview screen.



## 5.0 Playback

Select Playback interface fig 63 shown below and then select either Local, Remote or Picture button.

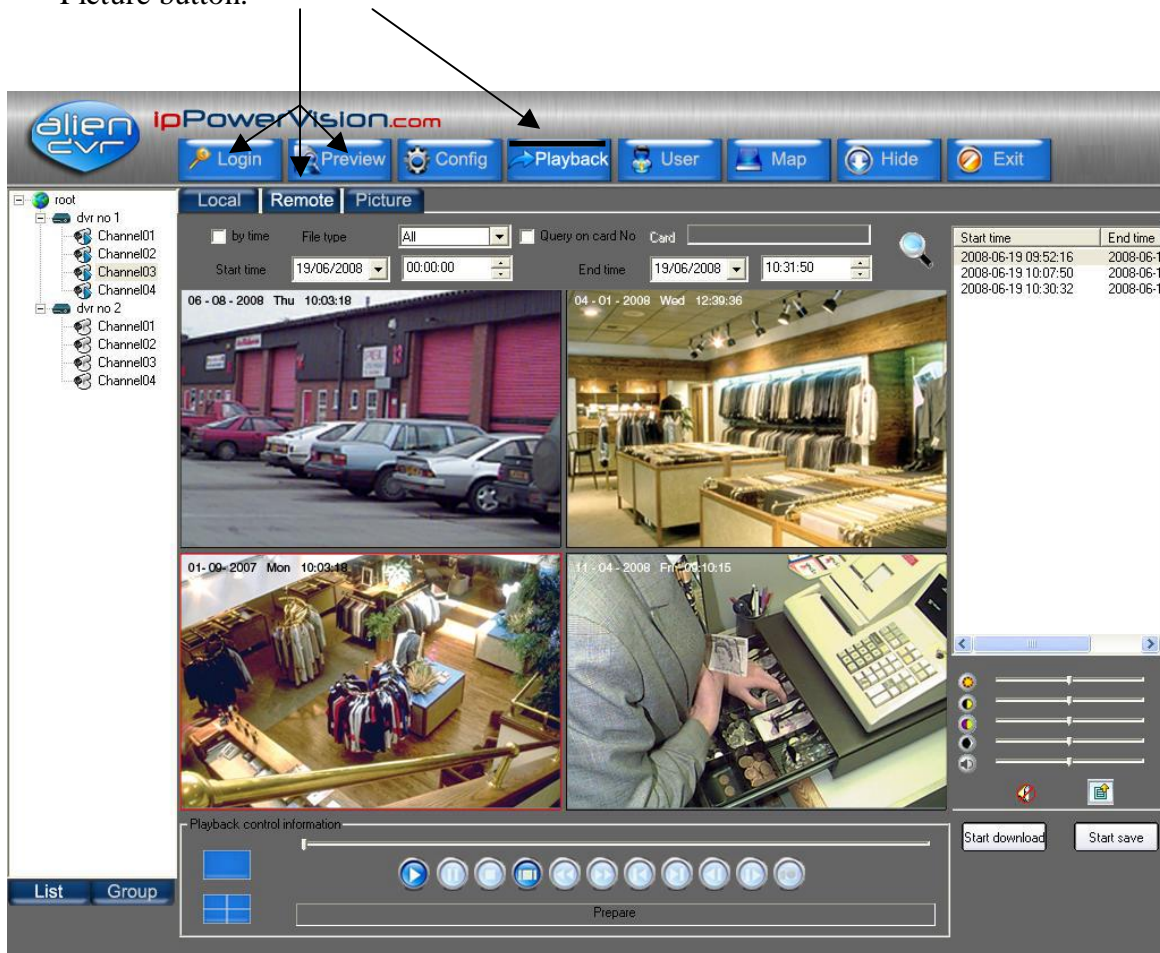


fig 63

### 5.1 Local Playback

Select channel from the left hand list, then click the “Search” button (magnifying glass) and all the file names and times selected will be displayed in the right hand list. User can drag a file to playback window or select a file and then click the play button to play the selected file. The user can adjust the selected playback window through the adjustment options in the video parameter control center right below playback control information and file list. The user can select single or multiple files from the file list and click the lower right corner “Delete file list” to delete the selected files.

### 5.2 Remote Playback

There are two types of playback in remote playback; one is by file type, the other is by time. The default type is by file type if not select “by time”.



### 5.2.1 Playback by file type

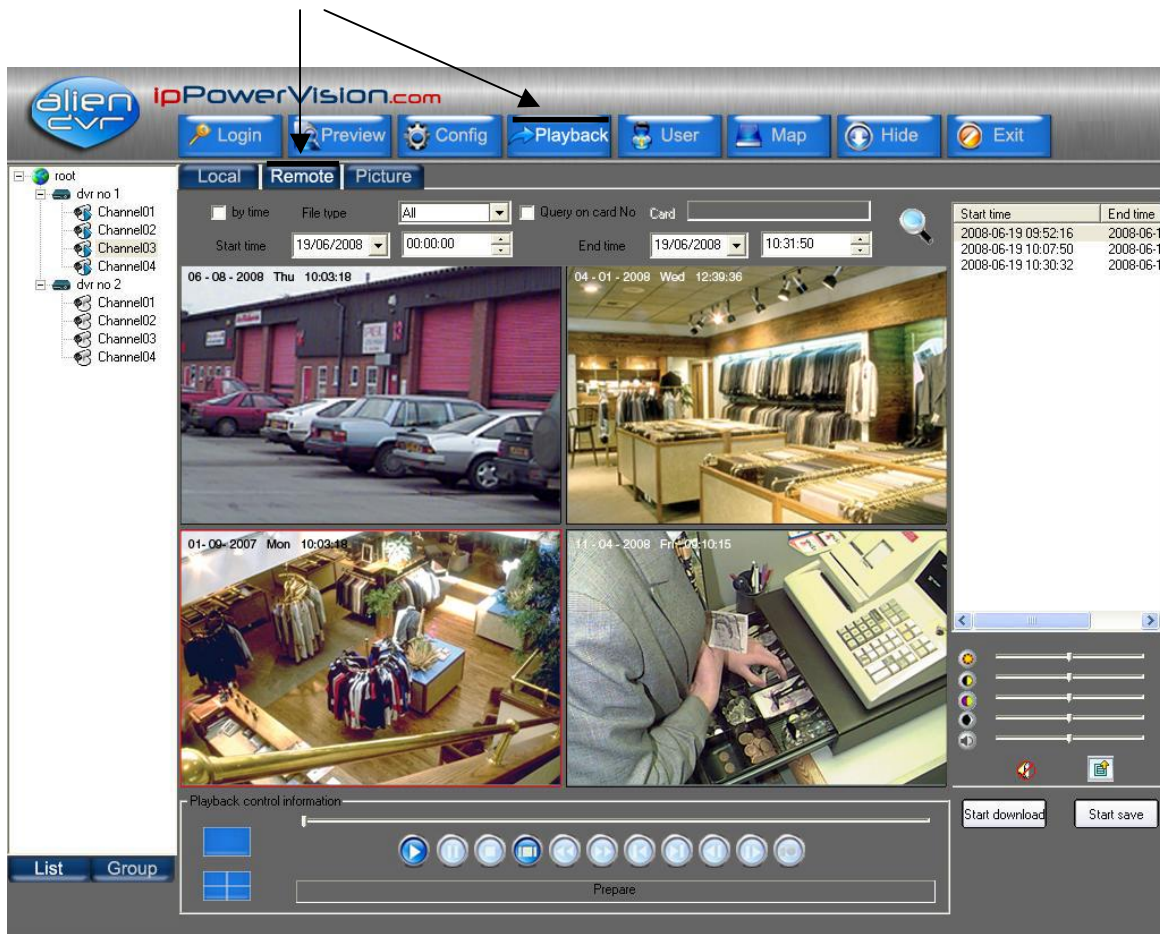


fig 64

Select channel, click "search" button, and all the names of files that meet the time and file type condition will be displayed in file list. User can drag a file to playback window or select a file and then click the play button to play the selected file. The user can adjust selected playback window through the adjustment options in the video parameter control center, below playback control information and file list. The left two buttons in the playback control panel can be used to divide playback window. Select a single file or multiple files from the file list, click the "begin to download" at the lower right corner, and the selected files will be downloaded to the folder set in the local setting. At the beginning of download, the "begin to download" changes into "stop to download" with the file name and download ratio being displayed.

## 5.2.2 Playback by time



fig 65

Select playback by time in remote playback, and enter into playback by time interface. Select channel and then click playback button to play a specific time span for this channel. Click Start download button in the lower right-hand corner to download this file.

If you select any window that is playing and then click “Start save” button, a “save as” window will be displayed. After confirm, it will save the remote video recording file from current position to the end of playback. There are some control buttons in local playback and remote playback showed as below:

The functions of each button are listed below:



Fig 66











Play button, this button is used to play selected files in the search list, to restore pause, or play file at normal speed in local and remote playback. In the playback by time, this button is used to play a remote video recording file with specific time span, restore pause, or play file at normal speed.



Pause button, used to pause ongoing file.



Stop button, used to stop playing video recording file in present window.

-  Stop All button, used to stop all the playing files.
-  Decrease playback speed button to 1/16 of normal speed maximum.
-  Increase video playback speed up to 16 times normal speed.
-  Return to the beginning of video recording files and restart the playing.
-  Forward to the end button, used to increase the playback speed and reach the 99% of file.
-  Single frame back button, only for local playback.
-  Single frame playback button
-  Capture image used in non-paused or non-single playback.

### 5.3 Playback Picture



fig 67

To differentiate from local playback and remote playback, picture playback can search by area or by equipment. Select one area, equipment or a channel, click “search”, then the names and save time of the files which meet the specific time requirement will be displayed. User can drag a file to the playback window, play selected pictures, and can browse pictures in the playback control information panel. If user

chooses automatic display, then pictures will be automatically displayed in previously set time span. The left two buttons in the playback control panel can be used to divide playback window. Control buttons are listed as below:



Back to the previous picture button until the picture played in present window is the first picture of the list. The mentioned “previous picture” means the previous picture of the present displayed picture in the search list of present window.



Forward to next picture button, until the picture played in present window is the last picture of the list. The mentioned “next picture” means the next picture of the present displayed picture in the search list of present window.



Play previous picture button. When you click this button, all the windows display previous pictures until every window displays the first picture of a list.



Play next picture button. When you click this button, all the windows display next pictures until every window displays the last picture of a list.



“Save as” button, used to save present picture of present window

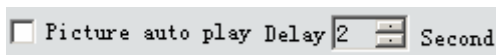


Fig 68

When user clicks Picture auto play Delay, the window will display the next picture. User will have to reset the time lag. Besides, local playback, remote playback and picture playback all support 4 windows simultaneous playback mode except remote playback by time:



1 window playback mode button



4 windows playback mode button



## 6. User Rights Management

### 6.1 Add and Delete Users

All the users except super-user which is registered the first time for user login of the software are related to certain areas and the areas define the devices within it. Areas are defined as a world icon (see below). The first world icon defines the highest level. If you are setting up a number of areas ensure that the area is directly above the DVRs that users require access. See fig 69.

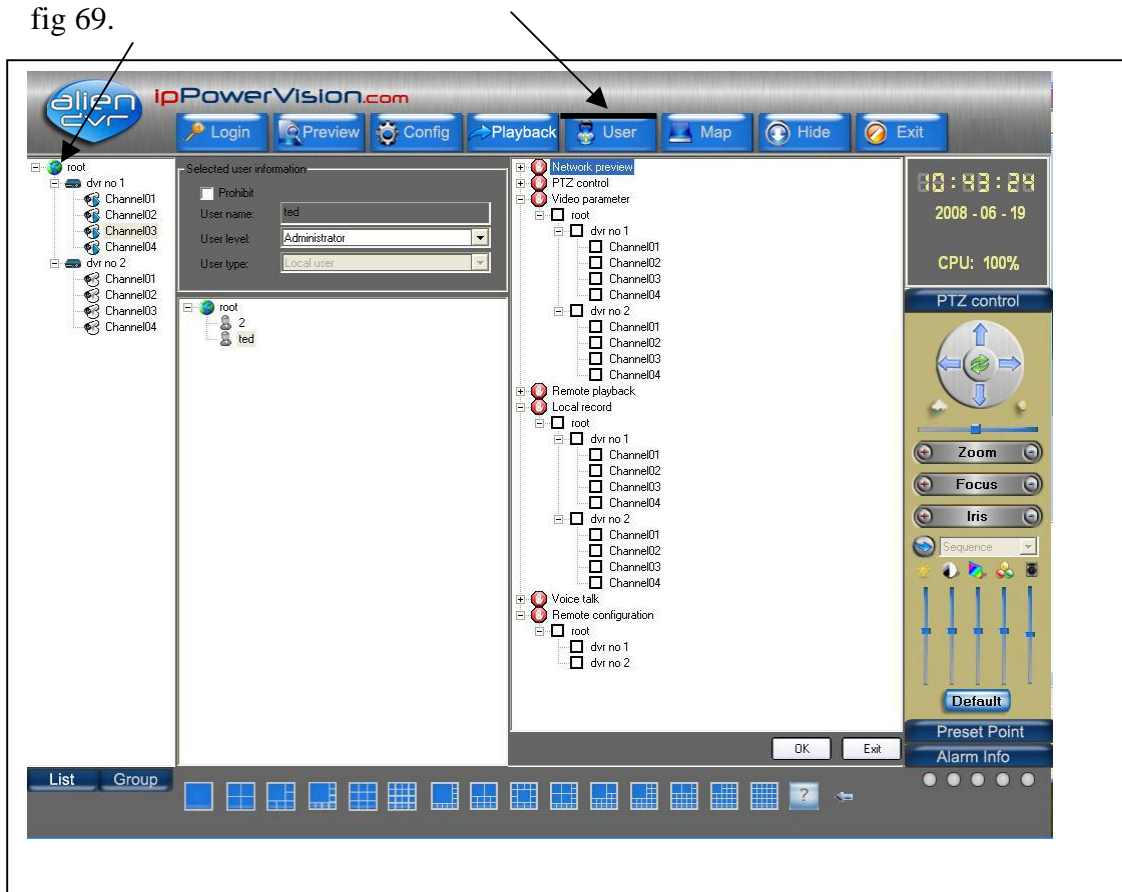


fig 69

If you click on a certain area, you can add a new low level user; or right click on a user to delete a low level user.

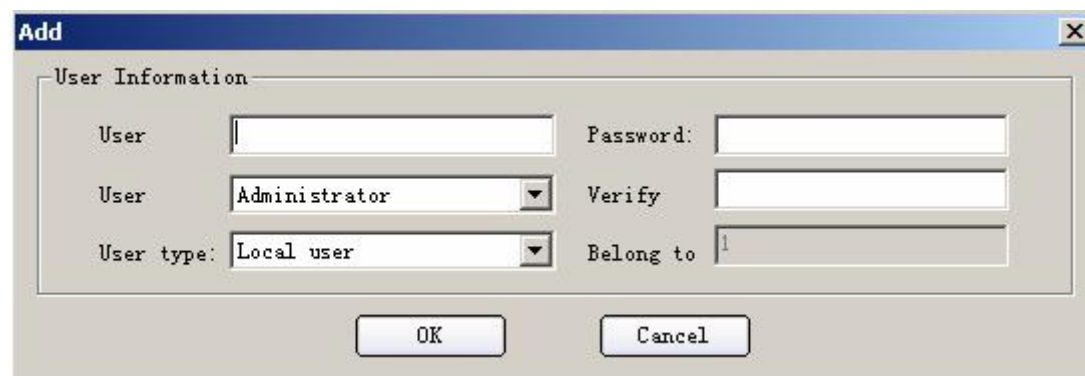
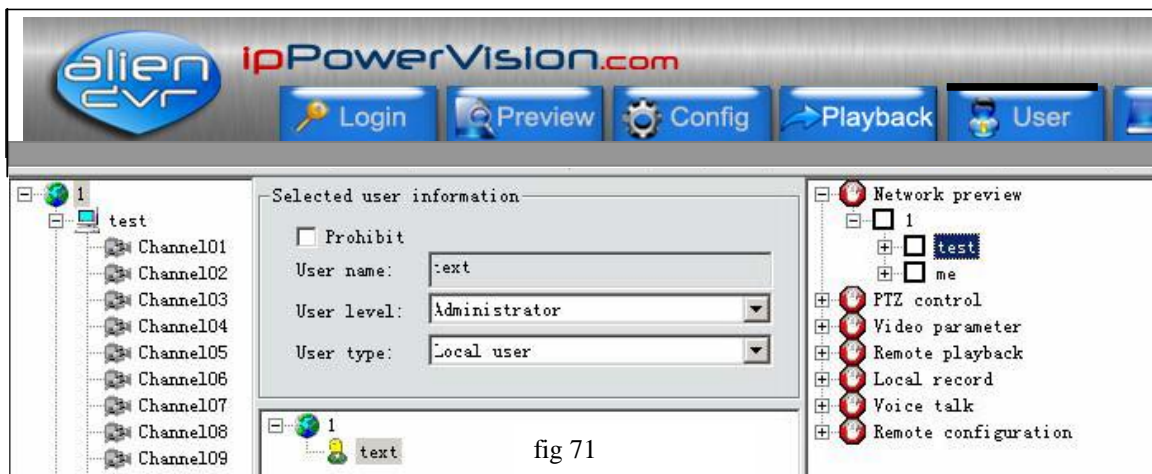


fig 70

(Level definition: registered super user> super user> advanced user> common user, network user> and local user)

## 6.2 Modify Users and select rights level

Select a user and all the relevant information such as user's name, level, type etc. will be displayed in the selected user's area. If the present logged user is a super user, then he can modify other users' levels, type etc. except his own. A user can however lower its own level. Also a super user or advanced user has the right to modify other selected users' control authority, such as PTZ control and video parameters. Common users don't have such authority. Right click to select a certain authority type and you can select or cancel all authorities. After authority modification you can save the information. See fig 71.



Note: Only when the user adds certain authorities can he have the corresponding operation control authority.

## 7. E-Map (Electronic Map)

There is no map when you first log in to the Electronic map. See fig 72

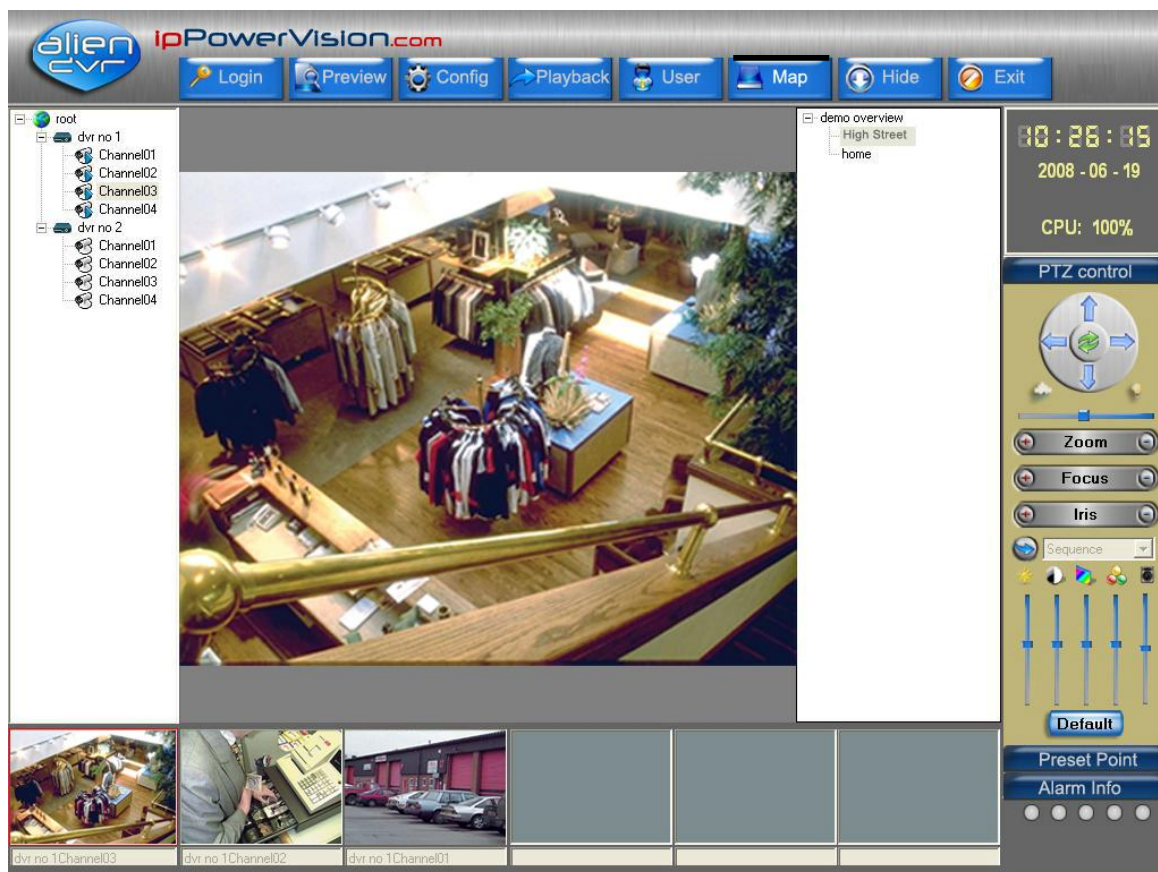


fig 72

If you right click the dark coloured part of the interface, it will show an interface that enables you to enter the higher layer map relating to the present map or enter into Electronic Map setup (NOTE: there is no entrance to this setup interface in multicast mode). Right click “root” in the electronic map setup interface.

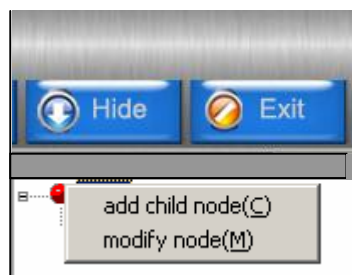


fig 73

The following popup menu to add a map is then displayed. See fig 74.



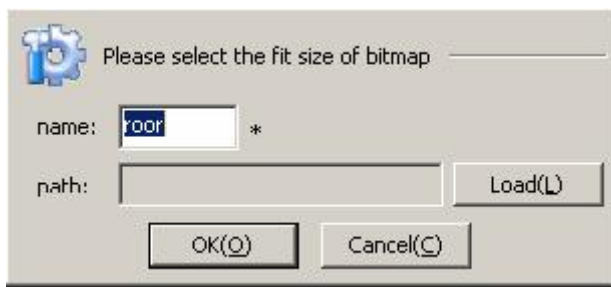


fig 74

Click and confirm “Successfully add root map” after selecting map. Right click the map as the above shows if you need to change or add a map. See fig 75.

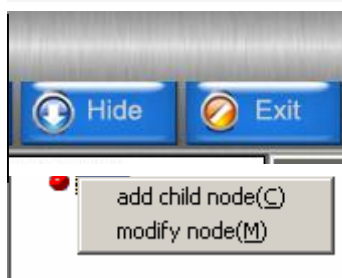
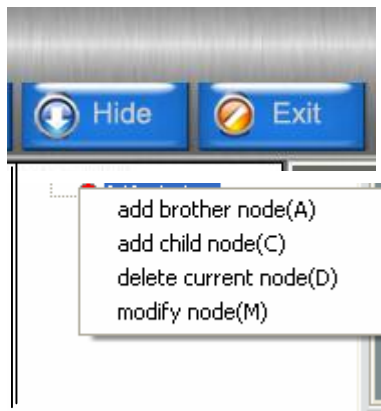


fig75

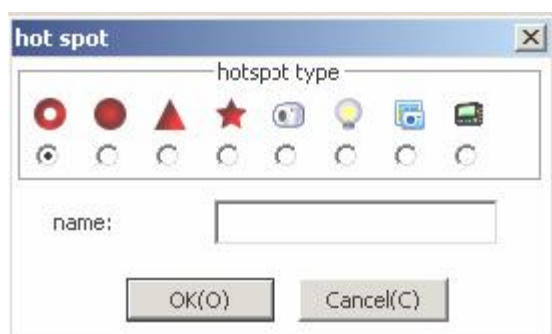
If your selection is not the root map, then you can choose to add brother maps or delete present maps.



The process to add brother maps is the same as when we add a root map.

fig 76

NOTE: the size of a map is limited to 5M per map.  
Right click on the map to add different icons for alarm spots.



Select the alarm hotspot type to correspond with the equipment listed down the left side of screen. After successfully adding, the interface should look like that shown in fig 78.

fig 77

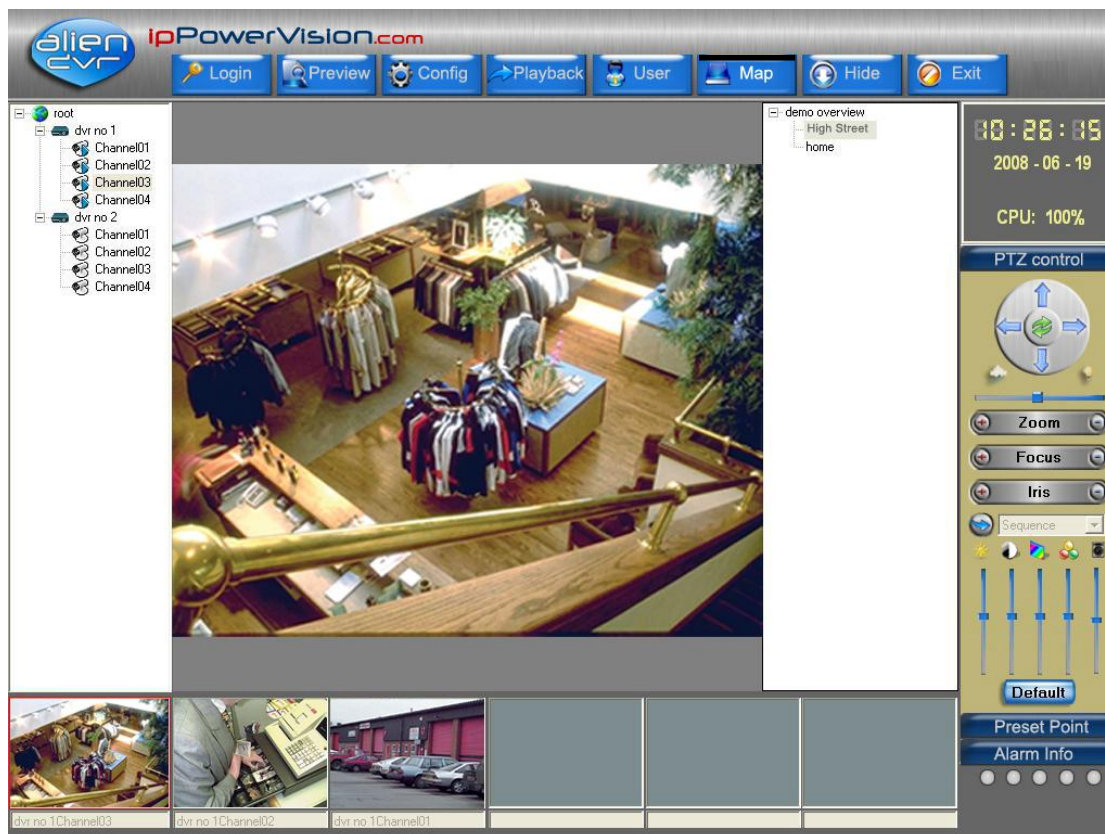


fig 78

The spot name in the hot spots list in the lower right corner is the lower layer map which belongs to the present map. Select one map from the lower right corner hot spots list, press Shift (or Ctrl) at the same time, then you can add (or delete) hot area on the map. The red area corresponds to the unselected hot spots list, whilst the blue area corresponds to the selected hot spots list. You can click “delete” to erase all corresponding areas or you can click “exit” to exit the setup interface. If you have set electronic map alarm, then corresponding hot spot will flash when alarm triggers. Click on this hotspot to clear the alarm and the hotspot will stop flashing until a new alarm is triggered. If you click on the channel-corresponding hotspot, the small window below the electronic map will display images from this channel. Click “Confirm” to shut down images from this channel. Also if you right click the window below the electronic map all the opened channel images will be shut down as shown below.



fig 79

## 8. Hide function

If you click the Hide button the software interface will be minimized. In the bottom right hand corner of your PC will be a small television icon. If you double click this icon the client software will be re-instated.



fig 80

## 9. Lock function

When the mouse is moved to the top right hand corner of the display screen just right of the Exit button, a Lock icon as shown in fig 81 below is displayed. Click this icon and the client will be locked. From this point any operation to the client is invalid. When this icon is clicked again, a dialog box confirming username and password is displayed. After inputting the present username and password, the client will be unlocked.

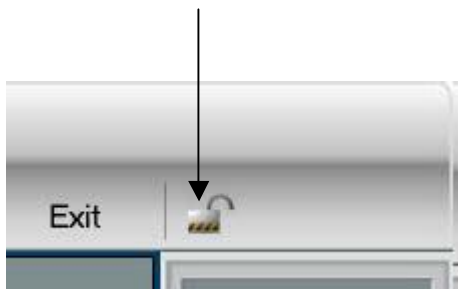


fig 81

## 10. Voice Talk

In the fast playback mode, select one DVR with right button, then you can talk with this equipment as shown in fig 82. (There is no such operation in the Multicast Mode.)



fig 82

NOTE: A client can only support one voice talk, so a new voice talk will terminate another ongoing voice talk (if there is another). When other DVR equipment is connected by a client, then their request for connection may be rejected.

## 11. DVR Server Status

You can use the client software to view the DVR Server current work status.

Select one DVR Server and click the right button of the mouse, click “Server Status” in the popup dialog box and then click the “Fetching Status” button. The client software will then display the DVR server current work status. See example below fig 83 to display Server work status. Click on Exit to end.

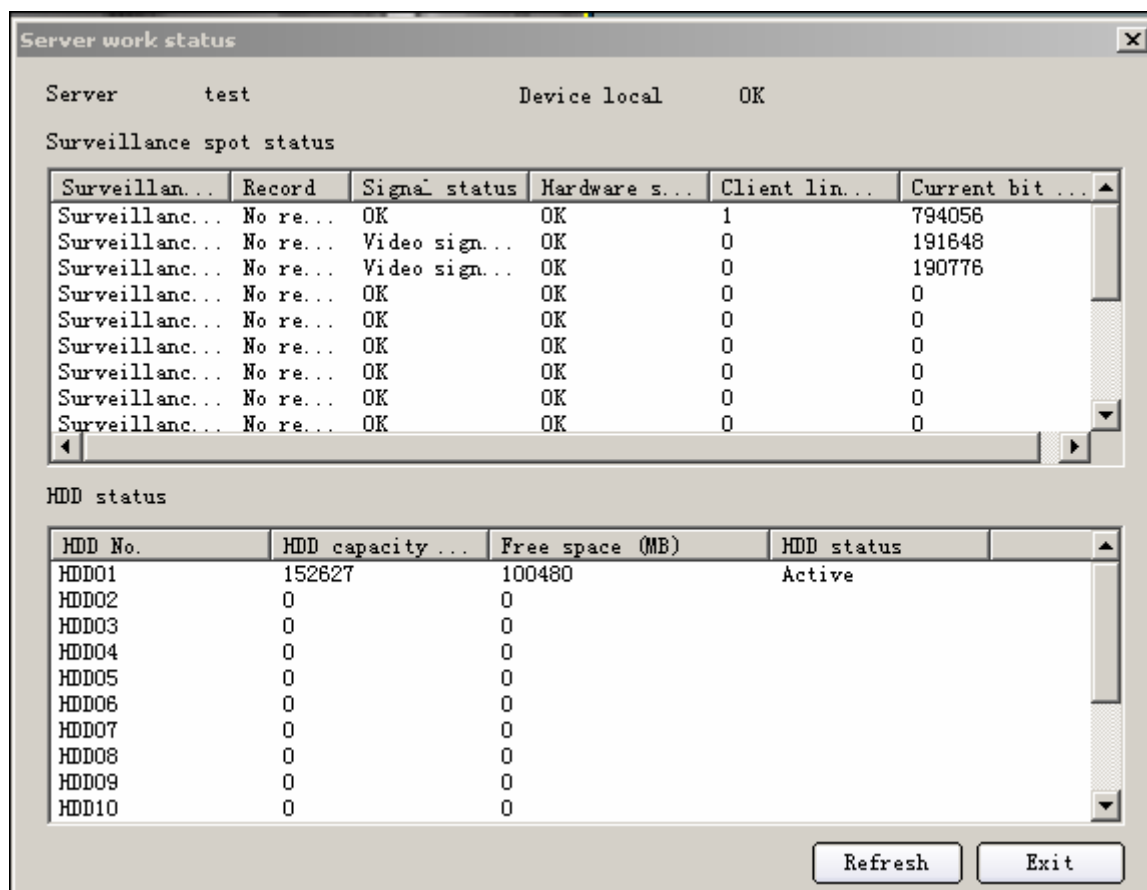


fig 83

## 12. Alien DVR Mobile Client

These instructions relate to the Symbian and Windows Mobile 5 Clients. Check your mobile phone operating instructions for the correct client to load.

### 12.1 Symbian Mobile Client

#### Requirements

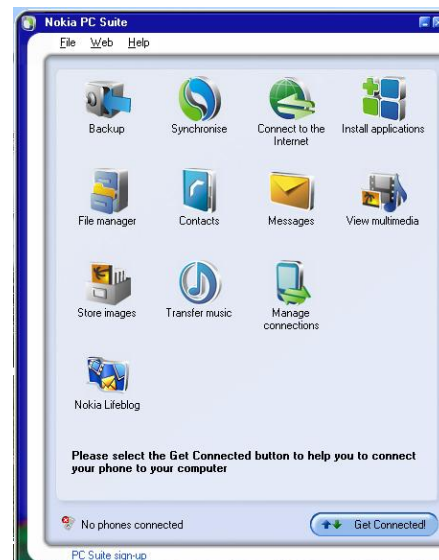
The Alien DVR Symbian mobile client requires a JAVA 2 compatible Internet enabled mobile device such as the Nokia™ N95.

#### Installation

The mobile client software needs to be installed on your mobile device before use. Please refer to your phone's or mobile device's instruction manual for information on how to perform this task.

When installing to a Nokia device such as the N95, installation can be achieved via the "Nokia PC Suite" software as outlined below.

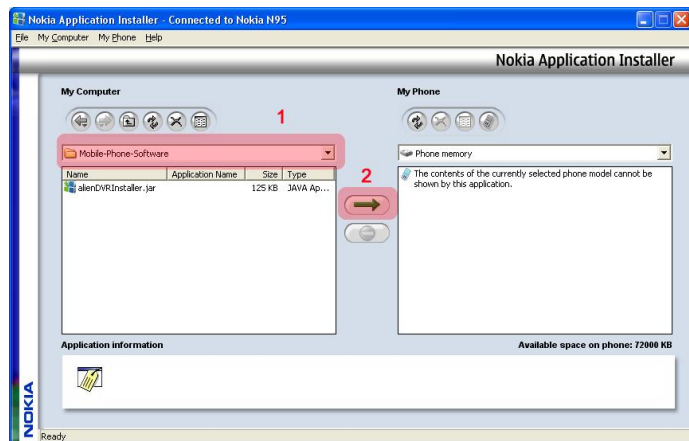
Firstly launch the Nokia PC Suite and click on "Install Applications"



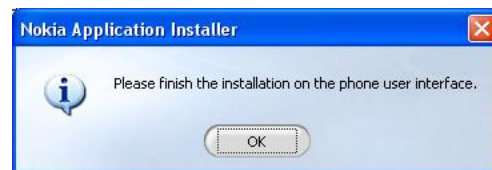
12.1.1. Click on the 'Navigator' and navigate to the folder containing the file 'alienDVRInstaller.jar'

Ensure that 'Phone Memory' is selected.

12.1.2. Click on the 'Install' arrow to send the file to the mobile device

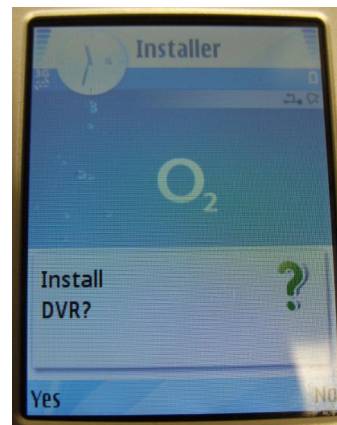


12.1.3 After the file has been transmitted to the mobile, application installation continues at the mobile device.

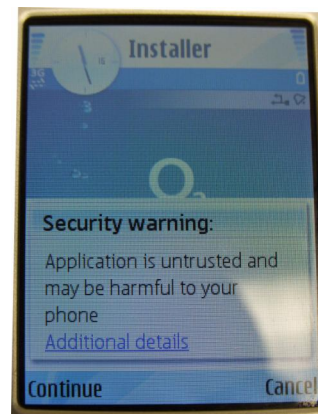


12.1.4 At the mobile device...

When prompted to install the software, select 'Yes'

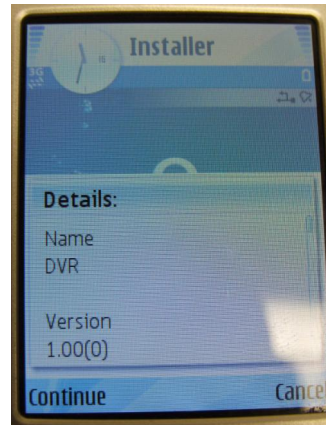


12.1.5 When prompted with a security warning, select 'Continue'

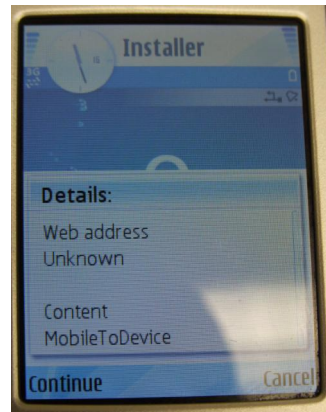




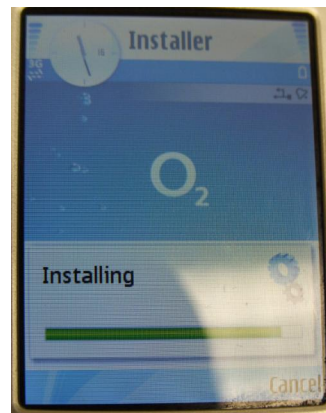
12.1.6 An information screen appears, select 'Continue'



12.1.7 A second information screen appears, select 'Continue'

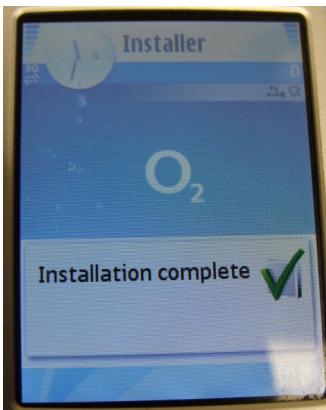


12.1.8 A progress indicator appears



12.1.9 Wait for installation to complete.

Please go to 12.3 for instructions on running the application.





## 12.2 Alien DVR : Windows Mobile Client

### Prerequisites

This client supports Windows Mobile Version 5 and this section was produced using screen shots from a HP iPAQ 514 Voice Messenger.

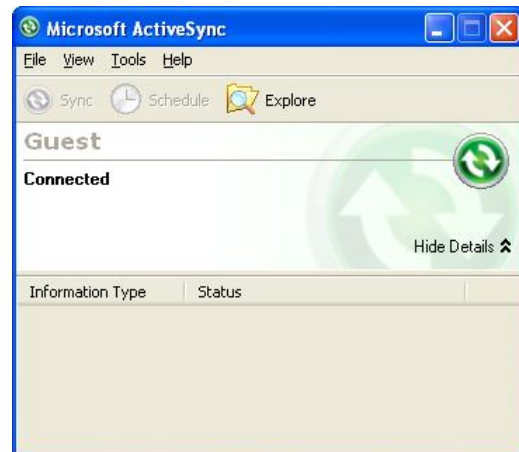
This guide assumes that you have an Internet enabled mobile device or have configured device access to a wireless network. Please ensure that you have connectivity before you continue.

The DVR client is a JAVA 2 application requiring “Esmertec’s Jbed Midlet Manager” for Windows Mobile devices, this must be installed first if it does already exist in your device.

### 12.2.1 Installing Esmertec’s Jbed Midlet Manager

Connect your mobile device to your PC using ‘ActiveSync’, then click on ‘Explore’ and navigate to the folder containing JBED\_en.cab

If installing from the CD, this will be ...  
<your CD Drive> \Data\Mobile-Device-Software\Windows-Mobile



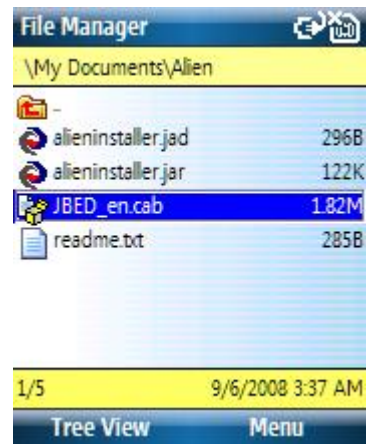
12.2.2 Create a folder called ‘Alien’ on your mobile device and paste the JBED\_en.cab file into that folder.

You will also require ...

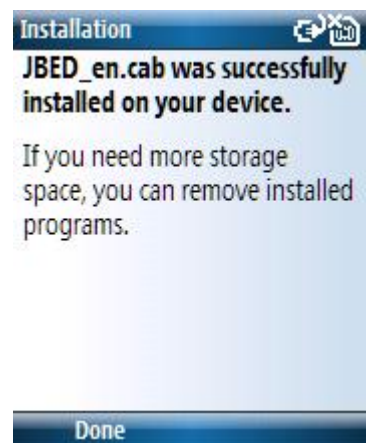
- Alieninstaller.jar
- Alieninstaller.jad

12.2.3 Open File Manager on the mobile device and navigate to the new 'Alien' folder

Highlight & select JBED\_en.cab, and allow it to install.

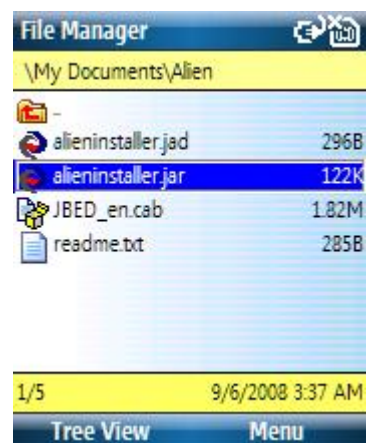


12.2.4 When installed, select **Done**

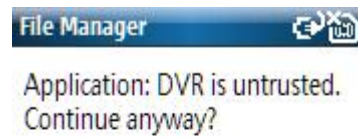


### 12.2.5 Installing the AlienDVR Mobile Client

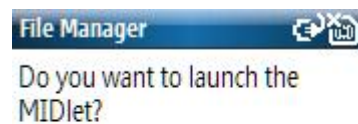
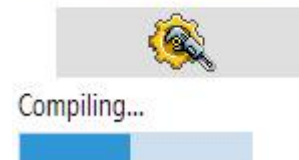
Using File Manager, highlight and select **alieninstaller.jar**



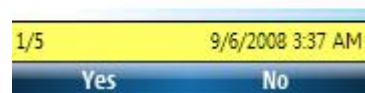
12.2.6 At the warning ‘Application: DVR is untrusted. Continue anyway?’, select **Yes**



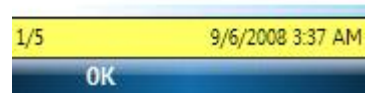
12.2.7 The installer starts and displays a progress bar



12.2.8 When prompted to launch the MIDlet, select **Yes**



12.2.9 At the language selection option, English is already highlighted, select **Ok**



12.2.10 The alien DVR logo screen appears



12.2.11 Select **Browse Device** and then navigate to and select **Add**



12.2.12 When the DVR properties window appears, enter ...

- a descriptive name for the DVR
- an IP address (or domain name)
- the DVRs port number
- username
- password

Then select **Save**



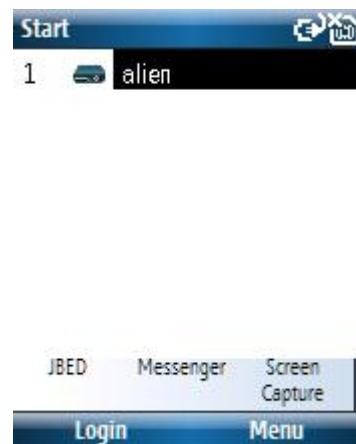
12.2.13 A notification appears indicating that the first DVR settings have been saved, select **Dismiss**



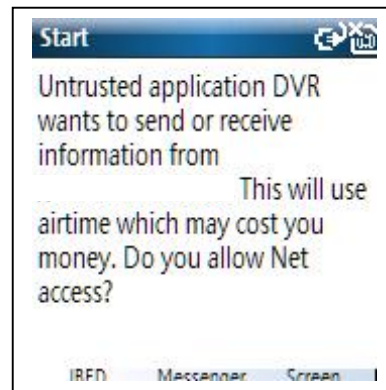
## 12.3 Connecting to the AlienDVR

12.3.1 Now that the application is installed and configured with it's first DVR you can select it from the device list.

Select **Login**



12.3.2 Your device may warn you when the DVR application attempts to open an IP connection; this is because data connections in many countries will be subject to mobile charges.  
Select **Yes**



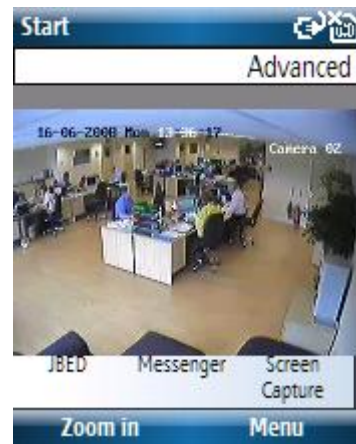
12.3.3 A login screen flashes whilst attempting to log onto the DVR, if it cannot connect it will fail at this point, otherwise it will display a camera/channel list.



12.3.4 When the channel list appears, highlight and then select the required channel/camera.



12.3.5 The application will display the video feed from the selected channel



12.3.6 To change camera view, select **Menu**, then highlight and select **Stop Preview**

This will return you to the previous window allowing you to select a new channel.



## 12.4 Controlling a PTZ

12.4.1 To active PTZ control, select **Menu**, then highlight and select **Start PTZ**.

NB: Ensure that the PTZ is configured and working at the DVR end before attempting remote control.





12.4.2 After controlling the PTZ, switch it off by selecting **Menu**, then highlighting and selecting **Stop PTZ**.



## 12.5 Disconnecting

12.5.1 Always try to disconnect gracefully from your DVR by selecting **Logout**, this is good practice and frees resources from the DVR leaving available for another session.



## 12.6 Remote Connection Tip

12.6.1 When attempting a remote connection, always try to connect via a numeric IP address rather than a domain name. If a domain name connection fails, then find out what the actual IP address is at that moment in time and try connecting to that instead. This will confirm whether DNS resolution is working at/for your site.